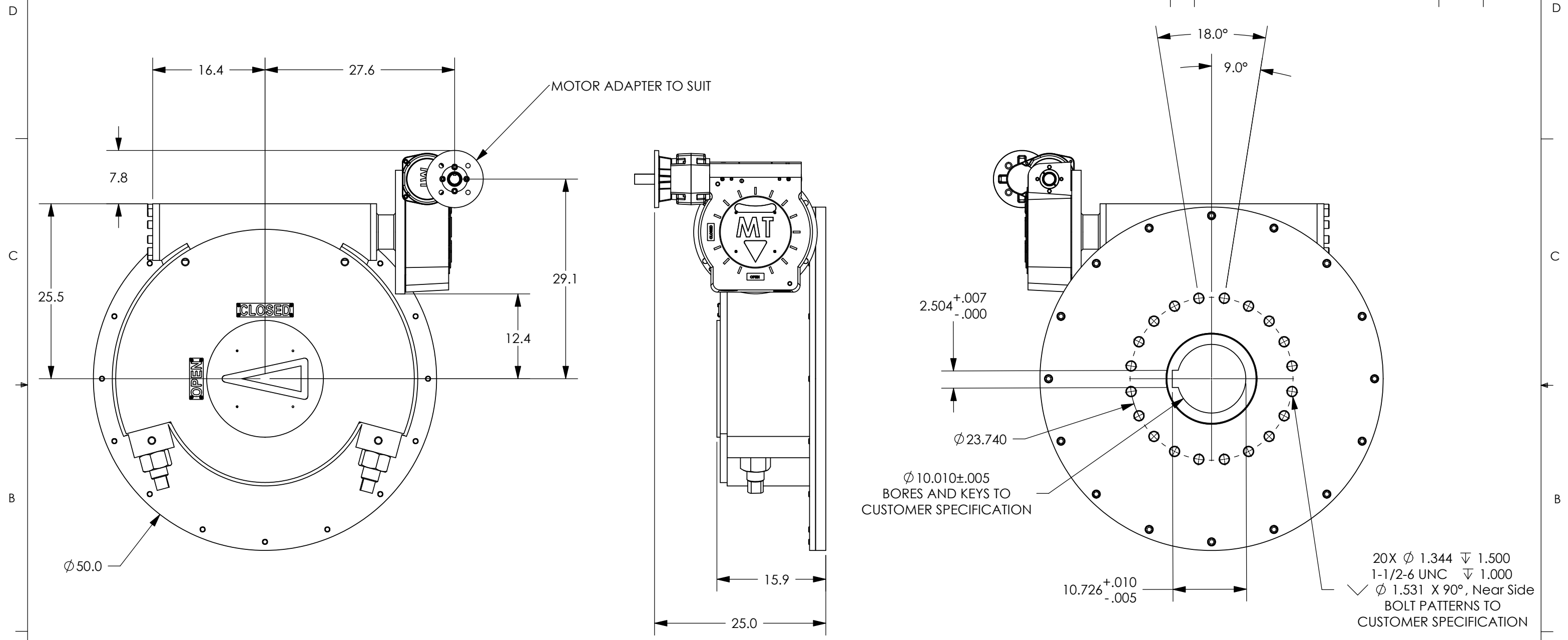


REVISIONS			
REV.	DESCRIPTION	DATE	APPROVED



NOTES:

- FINAL RATIO RANGE: : 1868 : 1
BASE RATIO: 30.75 : 1, WORM GEAR REDUCER RATIO: 20.25, BASE SPUR RATIO: 3 : 1
- MAX BORE AND KEY: $\phi 10.0$ " W/ 2 1/2" X 2" KEY
- MAX STEM ENGAGEMENT: 15 3/4
- APPROXIMATE WEIGHT: 3462 LBS
- UNIT IS SHOWN IN THE "OPEN" POSITION

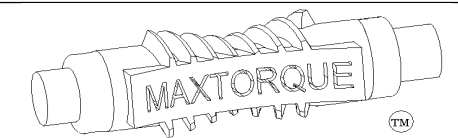
UNLESS OTHERWISE SPECIFIED:

DIMENSIONS ARE IN INCHES
TOLERANCES:
FRACTIONAL $\pm 1/32$
ANGULAR: MACH $\pm 1/2$
BEND $\pm 1/2$
TWO PLACE DECIMAL ± 0.02
THREE PLACE DECIMAL ± 0.005

MATERIAL: N/A
FINISH: PAINT
DO NOT SCALE DRAWING

	NAME	DATE
DRAWN	JM	7/17/06
CHECKED		
ENG APPR.		
MFG APPR.		
Q.A.		

COMMENTS:
Monday, July 17, 2006 10:21:22 AM



TITLE: MW3, WGR, BS3, GENERIC 1800K TO 2400K IN-LBS		
SIZE B	DWG. NO. 300122	REV.
SCALE: 1:14	WT: 3462 lbs	SHEET 1 OF 1

PROPRIETARY AND CONFIDENTIAL
THE INFORMATION CONTAINED IN THIS DRAWING IS THE SOLE PROPERTY OF MAX TORQUE. ANY REPRODUCTION IN PART OR AS A WHOLE WITHOUT THE WRITTEN PERMISSION OF MAX TORQUE IS PROHIBITED.