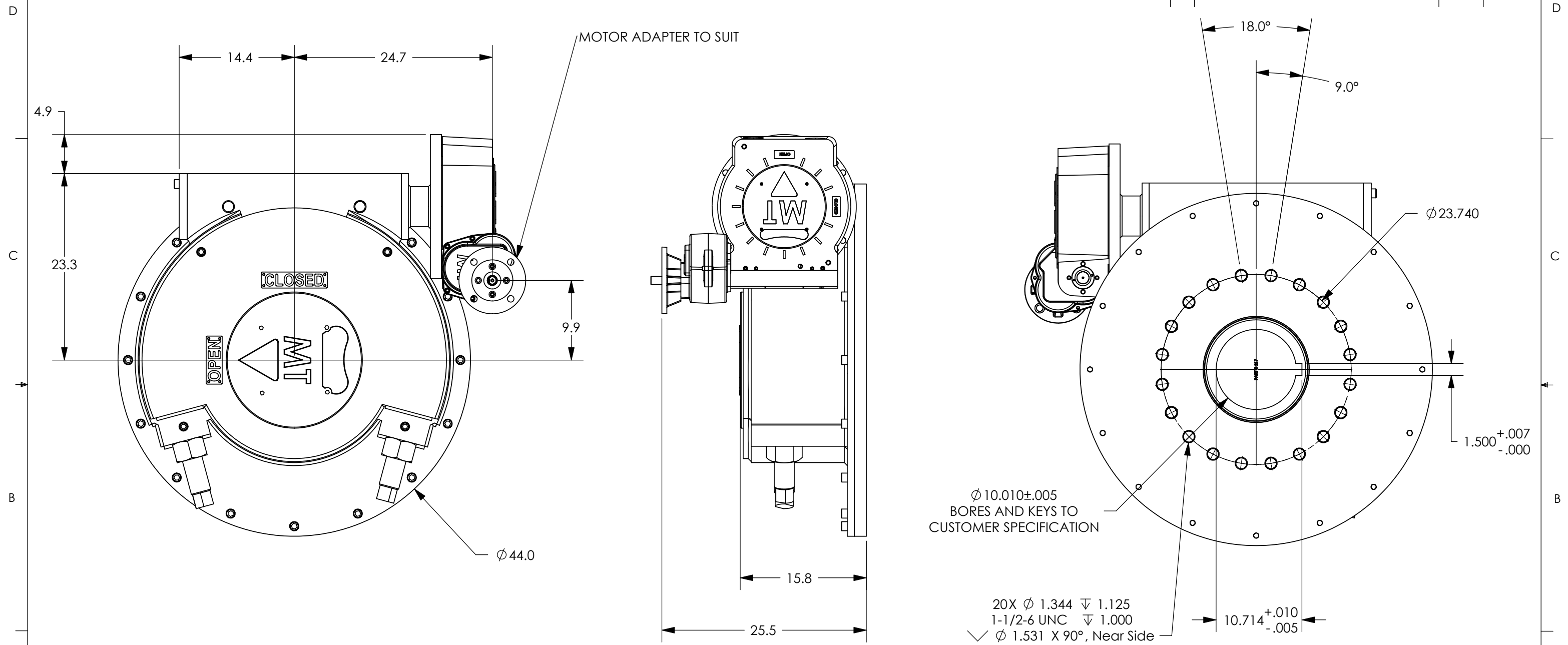


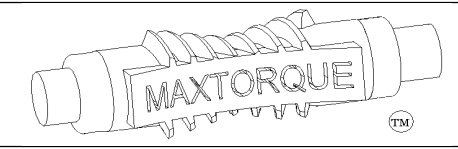
REVISIONS			
REV.	DESCRIPTION	DATE	APPROVED



- NOTES:
- FINAL RATIO RANGE: 2069.3 : 1 - 6952.8 : 1  
BASE RATIO: 27.25 : 1  
WORM GEAR REDUCER RATIO: 20.25 : 1  
AUXILLIARY SPUR RATIO RANGE: 3.75 : 1 - 12.6 : 1
  - MAX BORE & KEY: Ø 10" W/2 1/2" X 2" KEY
  - MAX STEM ENGAGEMENT: 15 3/4"
  - APPROXIMATE WEIGHT: 2892 LBS
  - UNIT IS SHOWN IN THE OPEN POSITION

**PROPRIETARY AND CONFIDENTIAL**  
THE INFORMATION CONTAINED IN THIS DRAWING IS THE SOLE PROPERTY OF MAX TORQUE. ANY REPRODUCTION IN PART OR AS A WHOLE WITHOUT THE WRITTEN PERMISSION OF MAX TORQUE IS PROHIBITED.

UNLESS OTHERWISE SPECIFIED:		NAME	DATE
DIMENSIONS ARE IN INCHES		DRAWN	JM 7/13/06
TOLERANCES:		CHECKED	
FRACTIONAL ±1/32		ENG APPR.	
ANGULAR: MACH ±1/2		MFG APPR.	
BEND ±1/2		Q.A.	
TWO PLACE DECIMAL ±.02		COMMENTS:	
THREE PLACE DECIMAL ±.005			
MATERIAL:	N/A		
FINISH:	PAINT		
DO NOT SCALE DRAWING			



TITLE: MW2, WGR, AX, GENERIC 1200K TO 1800K IN-LBS		
SIZE <b>B</b>	DWG. NO. 300119	REV.
SCALE: 1:12	WT: 2892 lbs	SHEET 1 OF 1

Monday, July 17, 2006 5:06:57 PM