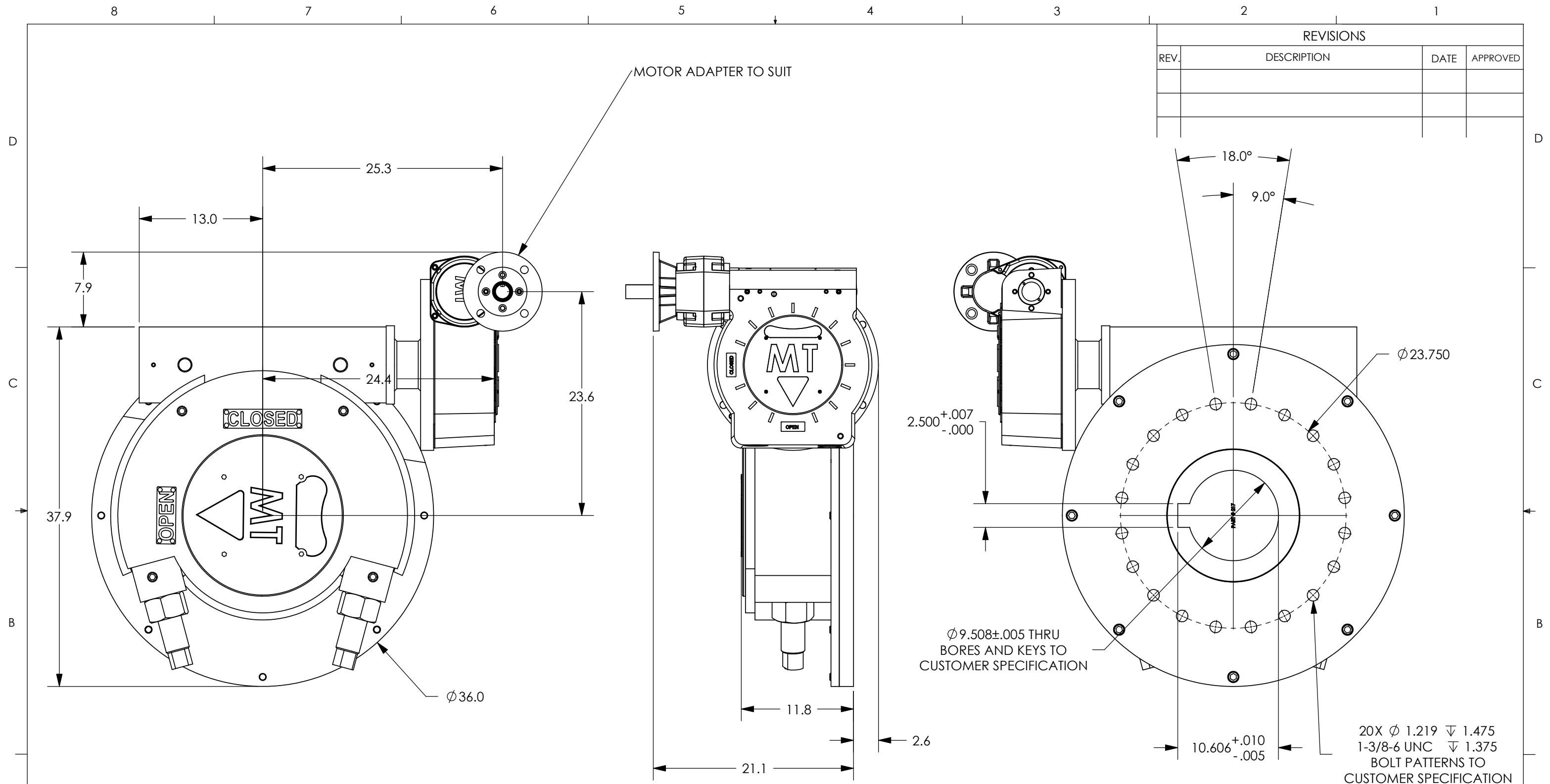


REVISIONS			
REV.	DESCRIPTION	DATE	APPROVED



- NOTES:
- FINAL RATIO: 1321.3 : 1
BASE RATIO: 21.75 : 1, WORM GEAR REDUCER RATIO: 20.25 : 1, BASE SPUR RATIO: 3 : 1
 - MAX BORE & KEY: ϕ 10 W/2 1/2" X 2" KEY
 - MAX STEM ENGAGEMENT: 15 3/4"
 - APPROXIMATE WEIGHT: 1994 LBS
 - UNIT IS SHOWN IN THE "OPEN" POSITION

PROPRIETARY AND CONFIDENTIAL
 THE INFORMATION CONTAINED IN THIS DRAWING IS THE SOLE PROPERTY OF MAX TORQUE. ANY REPRODUCTION IN PART OR AS A WHOLE WITHOUT THE WRITTEN PERMISSION OF MAX TORQUE IS PROHIBITED.

UNLESS OTHERWISE SPECIFIED:			
DIMENSIONS ARE IN INCHES	DRAWN	NAME	DATE
TOLERANCES:	CHECKED	JM	7/7/06
FRACTIONAL $\pm 1/32$	ENG APPR.		
ANGULAR: MACH $\pm 1/2$	MFG APPR.		
BEND $\pm 1/2$	Q.A.		
TWO PLACE DECIMAL $\pm .02$	COMMENTS:		
THREE PLACE DECIMAL $\pm .005$			
MATERIAL:			
N/A			
FINISH:			
PAINT			
DO NOT SCALE DRAWING			

MAXTORQUE

TITLE: MW1, WGR, BS3 GENERIC
800K TO 1200K IN-LBS

SIZE **B** DWG. NO. 300116 REV.

SCALE: 1:10 WT: 1994 lbs. SHEET 1 OF 1

Monday, September 25, 2006 1:29:00 PM