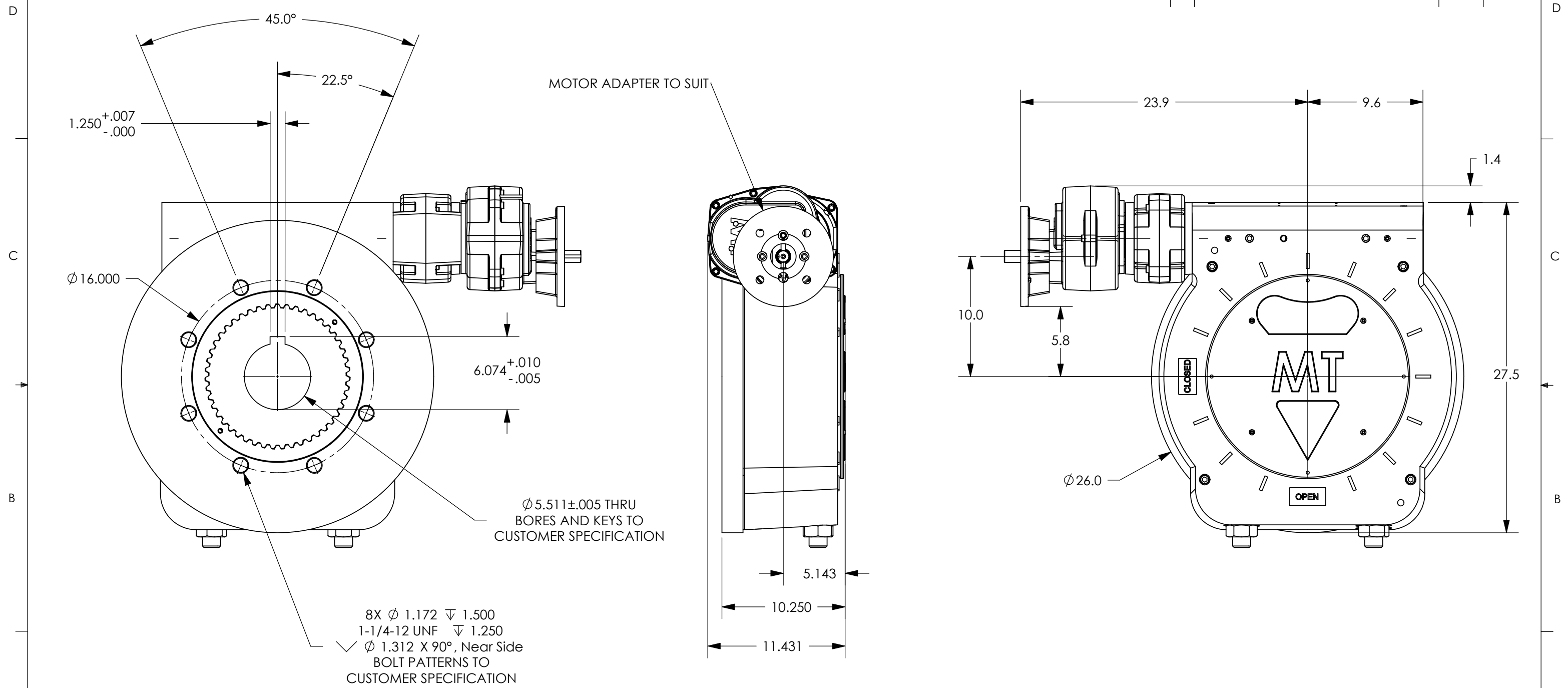


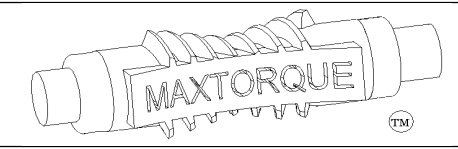
REVISIONS			
REV.	DESCRIPTION	DATE	APPROVED



- NOTES:
- FINAL RATIO RANGE: 22.75 : 1 - 860 : 1
BASE RATIO: 22.75 : 1, BASE SPUR RATIO: 3 : 1, AUXILLIARY SPUR RATIO RANGE: 3.75 : 1 - 12.6 : 1
 - MAX BORE & KEY: $\phi 9$ W/1" X 1 1/2" KEY
 - MAX STEM ENGAGEMENT: 9 1/2"
 - APPROXIMATE WEIGHT: 1182 LBS
 - UNIT IS SHOWN IN THE "OPEN" POSITION

PROPRIETARY AND CONFIDENTIAL
 THE INFORMATION CONTAINED IN THIS DRAWING IS THE SOLE PROPERTY OF MAX TORQUE. ANY REPRODUCTION IN PART OR AS A WHOLE WITHOUT THE WRITTEN PERMISSION OF MAX TORQUE IS PROHIBITED.

UNLESS OTHERWISE SPECIFIED:			
DIMENSIONS ARE IN INCHES	DRAWN	NAME	DATE
TOLERANCES:	CHECKED	JM	7/5/06
FRACTIONAL $\pm 1/32$	ENG APPR.		
ANGULAR: MACH $\pm 1/2$	MFG APPR.		
BEND $\pm 1/2$	Q.A.		
TWO PLACE DECIMAL $\pm .02$	COMMENTS:		
THREE PLACE DECIMAL $\pm .005$			
MATERIAL:			
N/A			
FINISH:			
PAINT			
DO NOT SCALE DRAWING			



TITLE: **BW3, BS3, AX, & MTR FLANGE**
 320K TO 480K IN-LBS

SIZE	DWG. NO.	REV.
B	300110	

SCALE: 1:8 WT: 1182 lbs SHEET 1 OF 1

Monday, July 17, 2006 11:43:13 AM