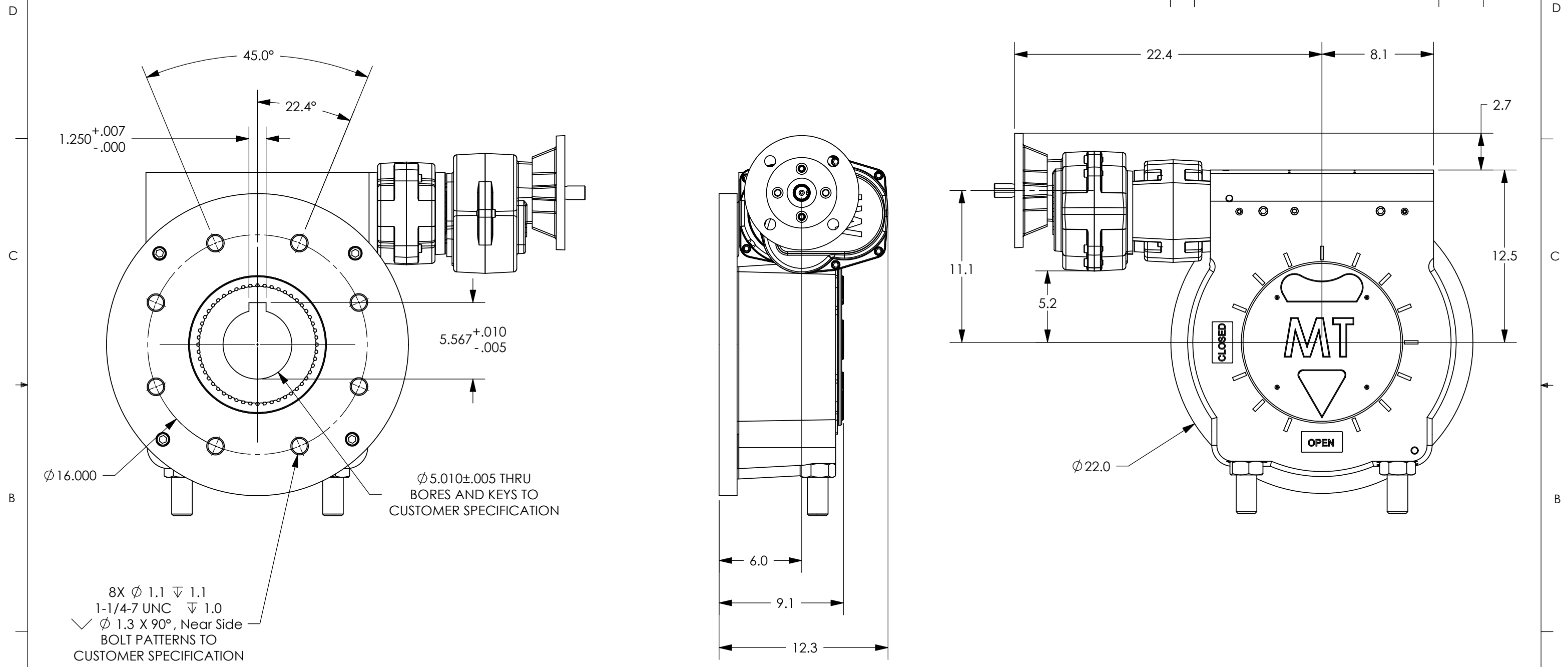


REVISIONS			
REV.	DESCRIPTION	DATE	APPROVED



8X  $\phi$  1.1  $\nabla$  1.1  
 1-1/4-7 UNC  $\nabla$  1.0  
 $\nabla$   $\phi$  1.3 X 90°, Near Side  
 BOLT PATTERNS TO  
 CUSTOMER SPECIFICATION

$\phi$  5.010 ± 0.005 THRU  
 BORES AND KEYS TO  
 CUSTOMER SPECIFICATION

- NOTES:
- FINAL RATIO RANGE: 18.75 : 1 - 708.75 : 1  
 BASE RATIO: 18.75 : 1, BASE SPUR RATIO: 3 : 1, AUXILLIARY SPUR RATIO RANGE: 3.75 : 1 - 12.6 : 1
  - MAX BORE & KEY:  $\phi$  6 1/2" W/1 1/2" X 1 KEY
  - MAX STEM ENGAGEMENT: 8 3/8"
  - APPROXIMATE WEIGHT: 733 LBS
  - UNIT IS SHOWN IN THE OPEN POSITION

**PROPRIETARY AND CONFIDENTIAL**  
 THE INFORMATION CONTAINED IN THIS  
 DRAWING IS THE SOLE PROPERTY OF  
 MAX TORQUE. ANY REPRODUCTION IN  
 PART OR AS A WHOLE WITHOUT THE  
 WRITTEN PERMISSION OF  
 MAX TORQUE IS PROHIBITED.

UNLESS OTHERWISE SPECIFIED:		NAME	DATE
DIMENSIONS ARE IN INCHES		DRAWN	JM 6/30/06
TOLERANCES:		CHECKED	
FRACTIONAL ± 1/32		ENG APPR.	
ANGULAR: MACH ± 1/2		MFG APPR.	
BEND ± 1/2		Q.A.	
TWO PLACE DECIMAL ± 0.02		COMMENTS:	
THREE PLACE DECIMAL ± 0.005			
MATERIAL:	N/A		
FINISH:	PAINT		
DO NOT SCALE DRAWING			



TITLE:  
**BW2 W/BS3 & AX, MOTOR ADAPT**  
 160K TO 320K IN-LBS

SIZE	DWG. NO.	REV.
<b>B</b>	300107	

SCALE: 1:7 WT: 733 lbs SHEET 1 OF 1

Friday, August 25, 2006 10:08:41 AM