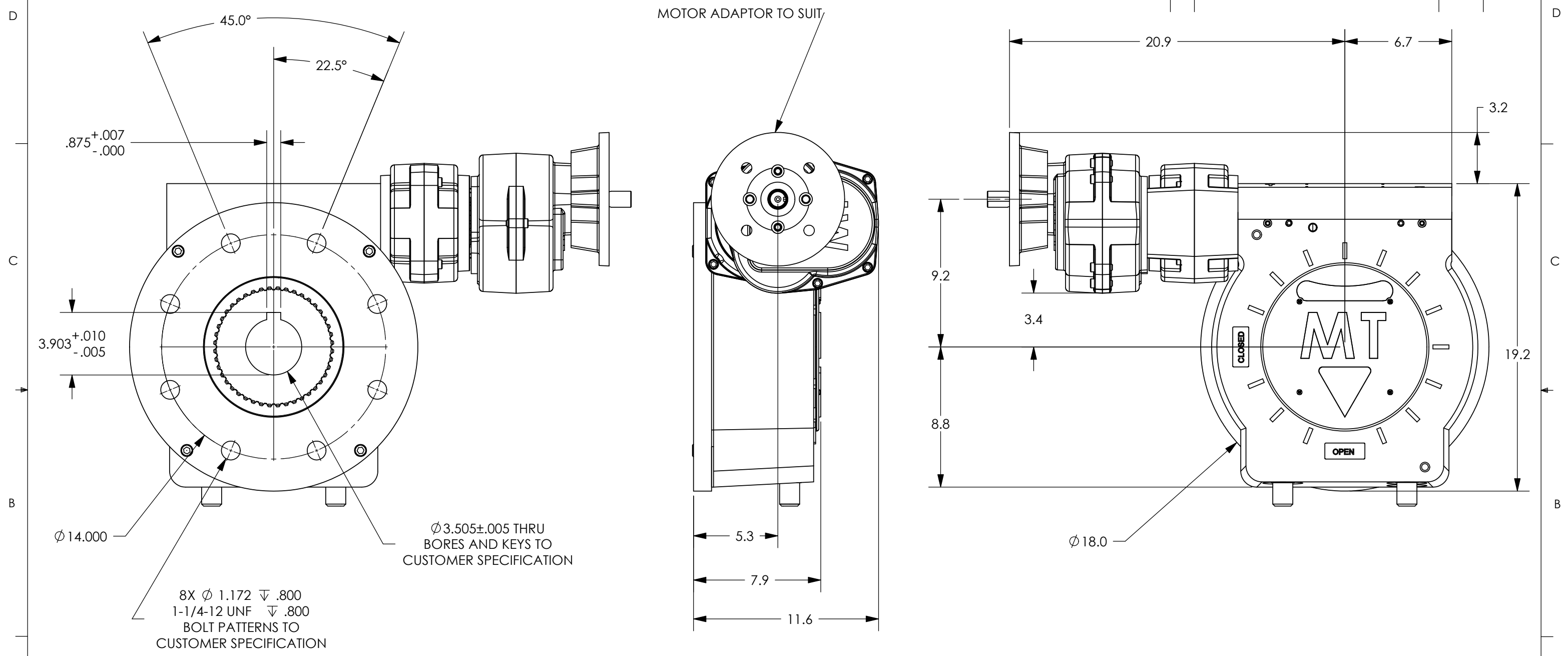


REVISIONS

REV.	DESCRIPTION	DATE	APPROVED



MOTOR ADAPTOR TO SUIT

.875<sup>+0.007</sup>  
-.000

3.903<sup>+0.010</sup>  
-.005

Ø 14.000

8X Ø 1.172 ∇ .800  
1-1/4-12 UNF ∇ .800  
BOLT PATTERNS TO  
CUSTOMER SPECIFICATION

Ø 3.505±.005 THRU  
BORES AND KEYS TO  
CUSTOMER SPECIFICATION

5.3

7.9

11.6

9.2

3.4

8.8

Ø 18.0

20.9

6.7

3.2

19.2

NOTES:

- FINAL RATIO RANGE: 20.25 : 1 - 765.45 : 1  
BASE RATIO: 20.25 : 1, BASE SPUR RATIO 3 : 1, AUXILLIARY SPUR RATIO RANGE: 3.75 : 1 - 12.6 : 1
- MAX BORE AND KEY: Ø 5 1/2" W/ 1 1/2" X 1" KEY
- MAX STEM ENGAGEMENT: 7 1/2"
- APPROXIMATE WEIGHT: 606 LBS
- UNIT IS SHOWN IN THE "OPEN" POSITION

UNLESS OTHERWISE SPECIFIED:

DIMENSIONS ARE IN INCHES  
TOLERANCES:  
FRACTIONAL ±1/32  
ANGULAR: MACH ±1/2  
BEND ±1/2  
TWO PLACE DECIMAL ±.02  
THREE PLACE DECIMAL ±.005

MATERIAL:

N/A

FINISH:

PAINT

DO NOT SCALE DRAWING

NAME DATE

DRAWN JM 6/29/06

CHECKED

ENG APPR.

MFG APPR.

Q.A.

COMMENTS:

Wednesday, July 05, 2006 10:45:54 AM



TITLE:  
BW1 W/BS3, AX, & MOTOR ADAPT  
80K TO 160K IN-LBS

SIZE DWG. NO. REV.  
**B** 300104

SCALE: 1:6 WT: 606 lbs. SHEET 1 OF 1

**PROPRIETARY AND CONFIDENTIAL**  
THE INFORMATION CONTAINED IN THIS  
DRAWING IS THE SOLE PROPERTY OF  
MAX TORQUE. ANY REPRODUCTION IN  
PART OR AS A WHOLE WITHOUT THE  
WRITTEN PERMISSION OF  
MAX TORQUE IS PROHIBITED.