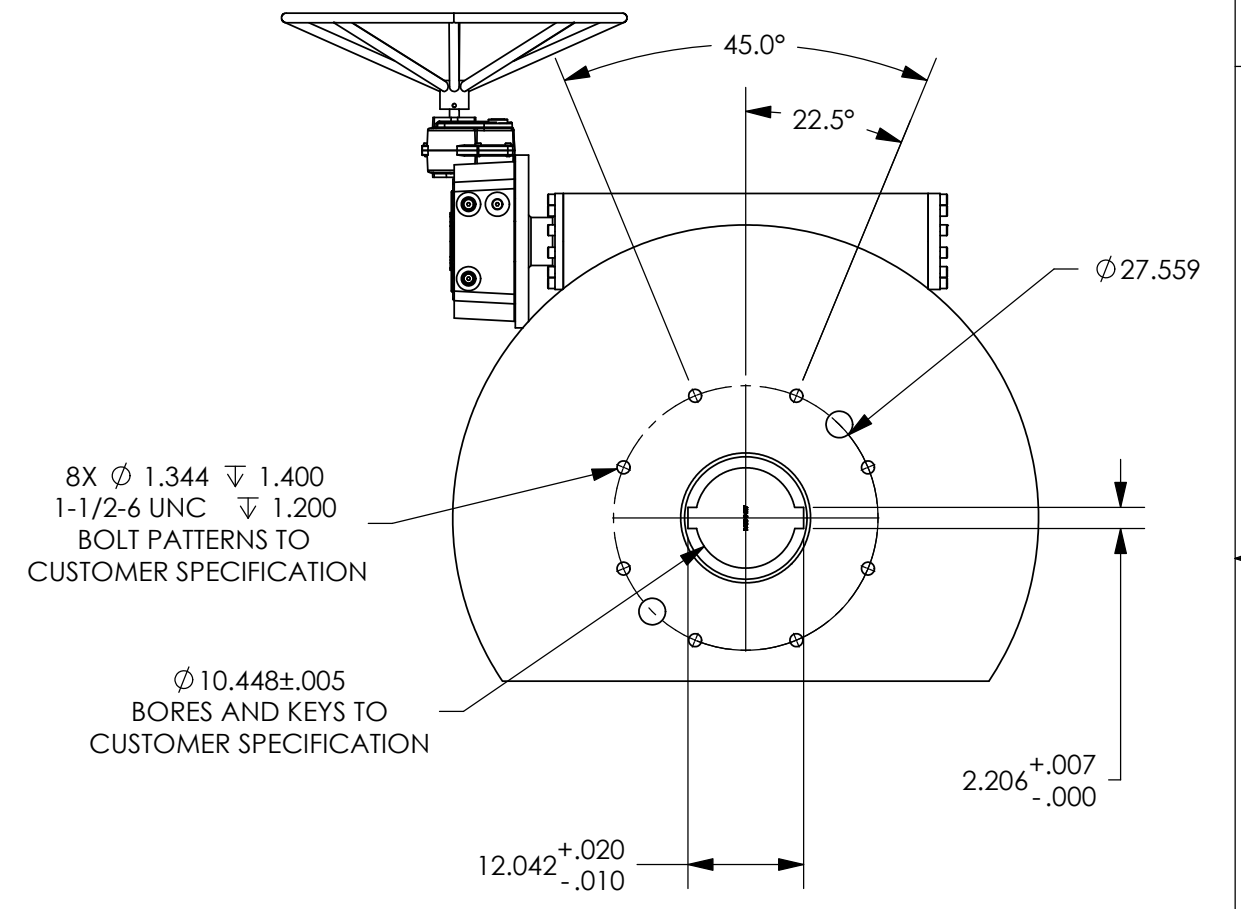
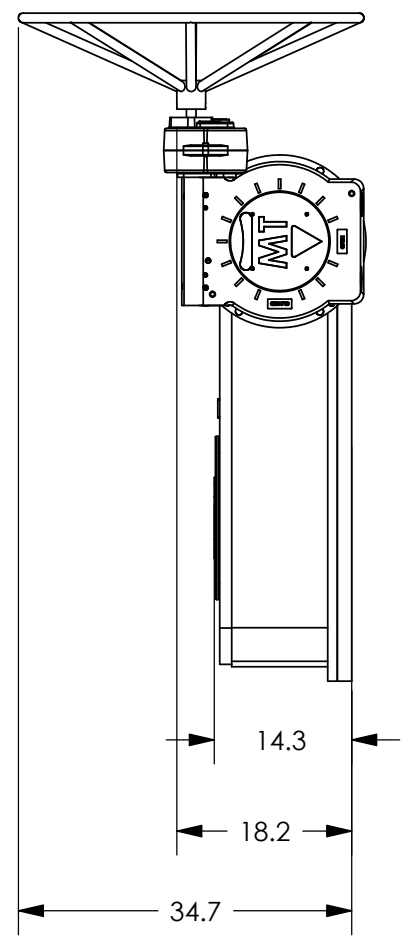
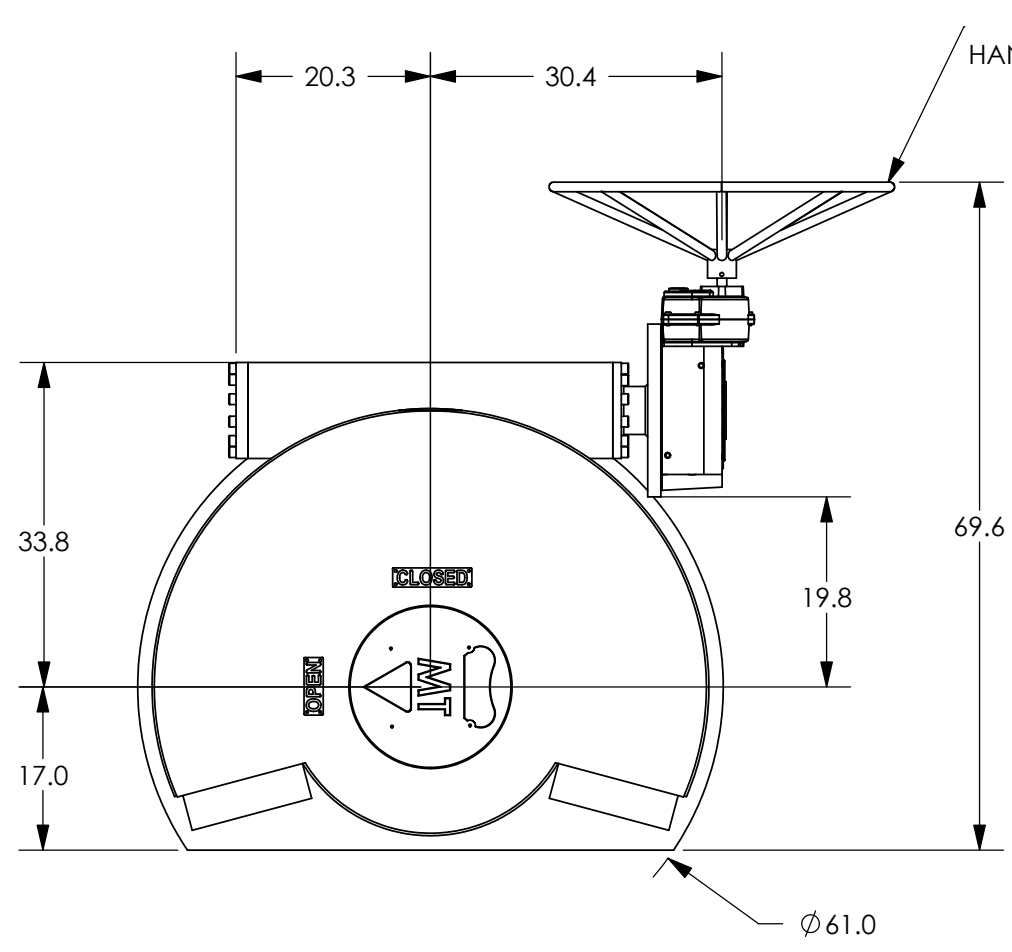


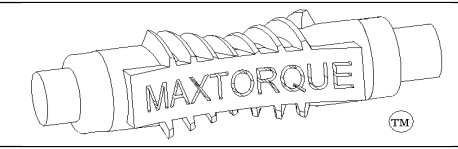
REVISIONS			
REV.	DESCRIPTION	DATE	APPROVED



- NOTES:
- FINAL RATIO RANGE: 2866.6 : 1 - 9632 : 1
BASE RATIO: 37.75 : 1, WORM GEAR REDUCER RATIO: 20.25 : 1, AUXILLIARY SPUR RATIO RANGE: 3.75 : 1 - 12.6 : 1
 - MAX BORE & KEY: $\phi 10"$ W/2 1/2" X 2" KEY
 - MAX STEM ENGAGEMENT: 15 3/4"
 - APPROXIMATE WEIGHT: 4719 LBS
 - UNIT IS SHOWN IN THE "OPEN" POSITION

PROPRIETARY AND CONFIDENTIAL
THE INFORMATION CONTAINED IN THIS DRAWING IS THE SOLE PROPERTY OF MAX TORQUE. ANY REPRODUCTION IN PART OR AS A WHOLE WITHOUT THE WRITTEN PERMISSION OF MAX TORQUE IS PROHIBITED.

UNLESS OTHERWISE SPECIFIED:		NAME	DATE
DIMENSIONS ARE IN INCHES		DRAWN	JM 7/18/06
TOLERANCES:		CHECKED	
FRACTIONAL $\pm 1/32$		ENG APPR.	
ANGULAR: MACH $\pm 1/2$		MFG APPR.	
BEND $\pm 1/2$		Q.A.	
TWO PLACE DECIMAL $\pm .02$		COMMENTS:	
THREE PLACE DECIMAL $\pm .005$			
MATERIAL:	N/A		
FINISH:	PAINT		
DO NOT SCALE DRAWING			



TITLE: MW4 MANUAL, GENERIC 3000K TO 3750K IN-LBS		
SIZE	DWG. NO.	REV.
B	300123	
SCALE: 1:20	WT: 4719 lbs.	SHEET 1 OF 1

Thursday, July 27, 2006 10:27:42 AM