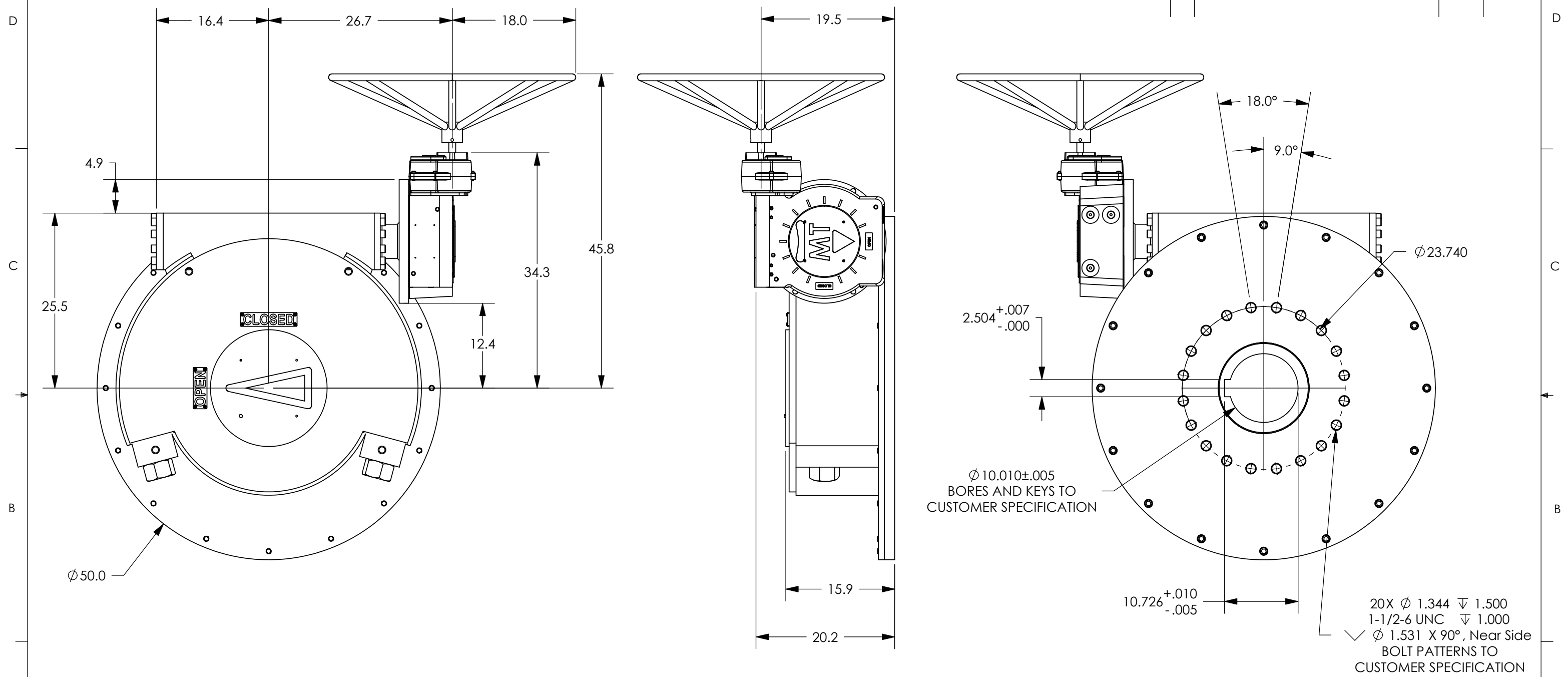


REVISIONS			
REV.	DESCRIPTION	DATE	APPROVED



NOTES:

- FINAL RATIO RANGE: 2335 : 1 - 7846 : 1  
BASE RATIO: 30.75 : 1, WORM GEAR REDUCER RATIO: 20.25, AUXILLIARY SPUR RATIO RANGE: 3.75 : 1 - 12.6 : 1
- MAX BORE AND KEY:  $\phi 10.0$ " W/ 2 1/2" X 2" KEY
- MAX STEM ENGAGEMENT: 15 3/4
- APPROXIMATE WEIGHT: 3444 LBS
- UNIT IS SHOWN IN THE "OPEN" POSITION

**PROPRIETARY AND CONFIDENTIAL**  
THE INFORMATION CONTAINED IN THIS DRAWING IS THE SOLE PROPERTY OF MAX TORQUE. ANY REPRODUCTION IN PART OR AS A WHOLE WITHOUT THE WRITTEN PERMISSION OF MAX TORQUE IS PROHIBITED.

UNLESS OTHERWISE SPECIFIED:		NAME	DATE
DIMENSIONS ARE IN INCHES		DRAWN	JM 7/17/06
TOLERANCES:		CHECKED	
FRACTIONAL $\pm 1/32$		ENG APPR.	
ANGULAR: MACH $\pm 1/2$		MFG APPR.	
BEND $\pm 1/2$		Q.A.	
TWO PLACE DECIMAL $\pm .02$		COMMENTS:	
THREE PLACE DECIMAL $\pm .005$			
MATERIAL:			
FINISH:			
DO NOT SCALE DRAWING			



TITLE: MW3, MANUAL, GENERIC 2250K TO 3000K IN-LBS		
SIZE <b>B</b>	DWG. NO. 300120	REV. 
SCALE: 1:14	WT: 3444 lbs	SHEET 1 OF 1

Thursday, July 27, 2006 10:11:23 AM