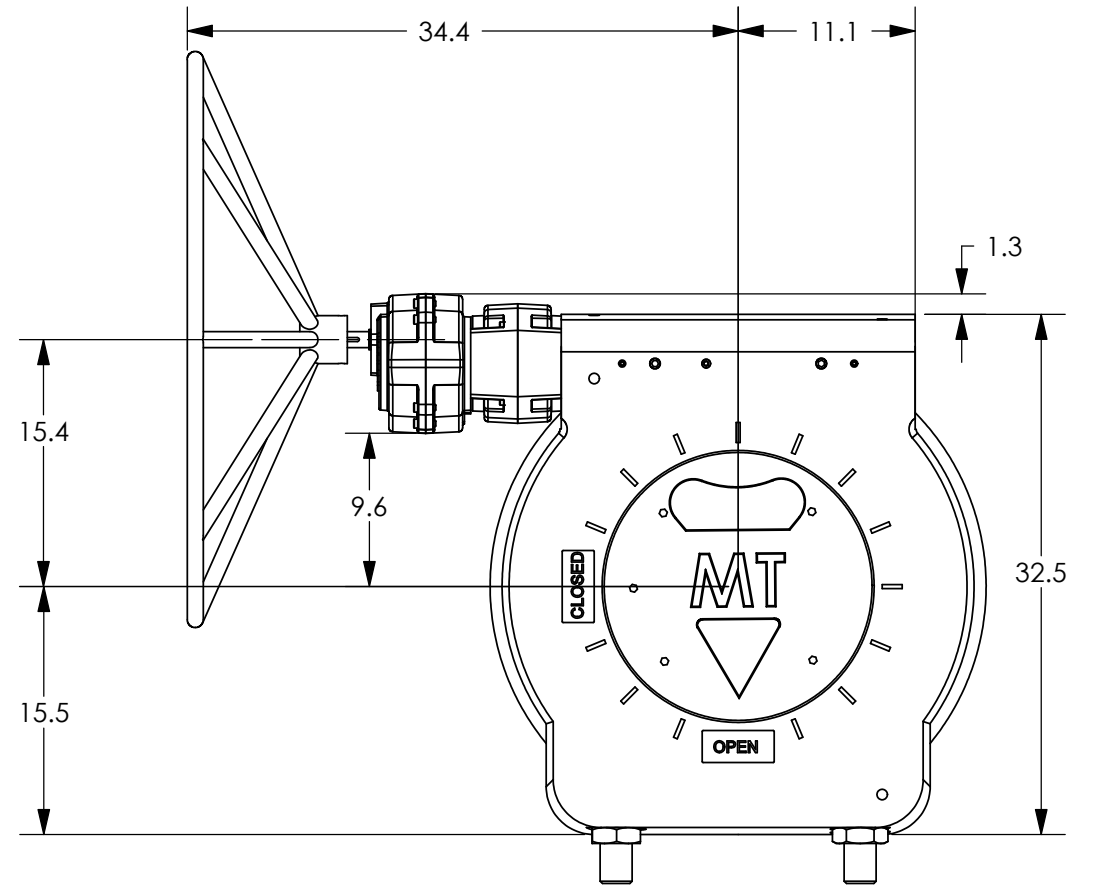
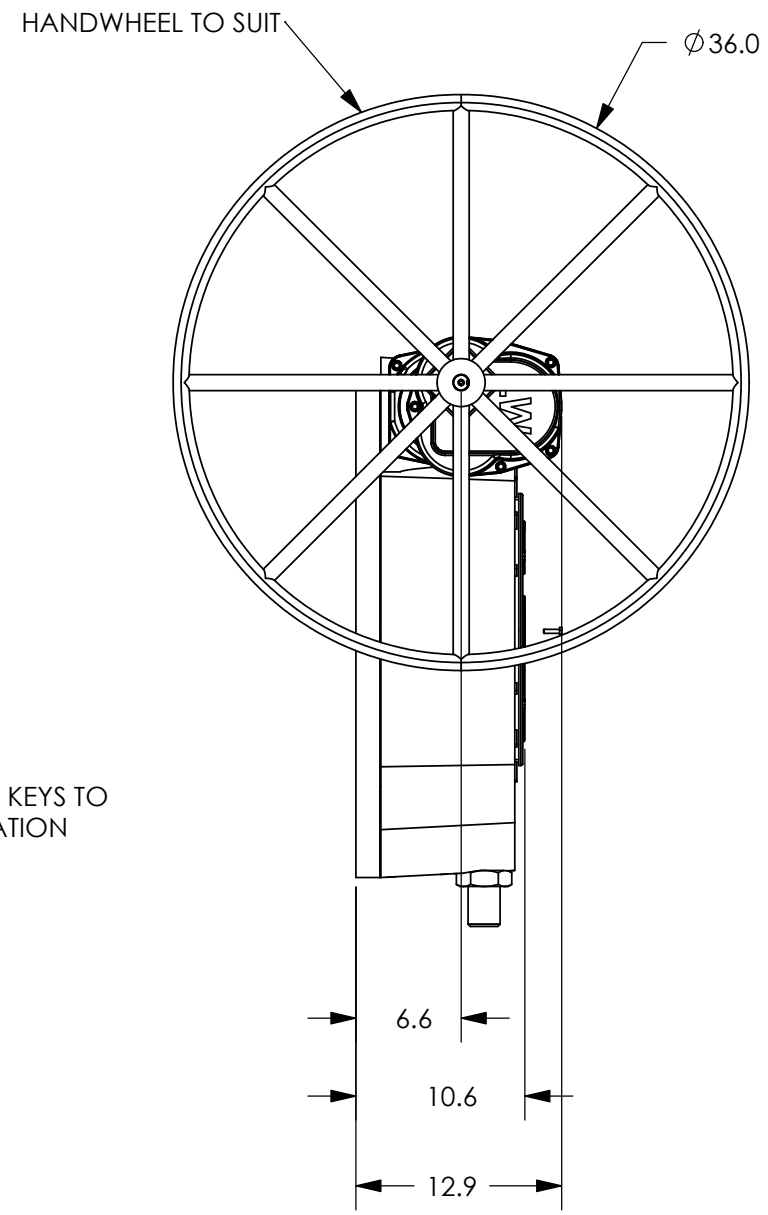
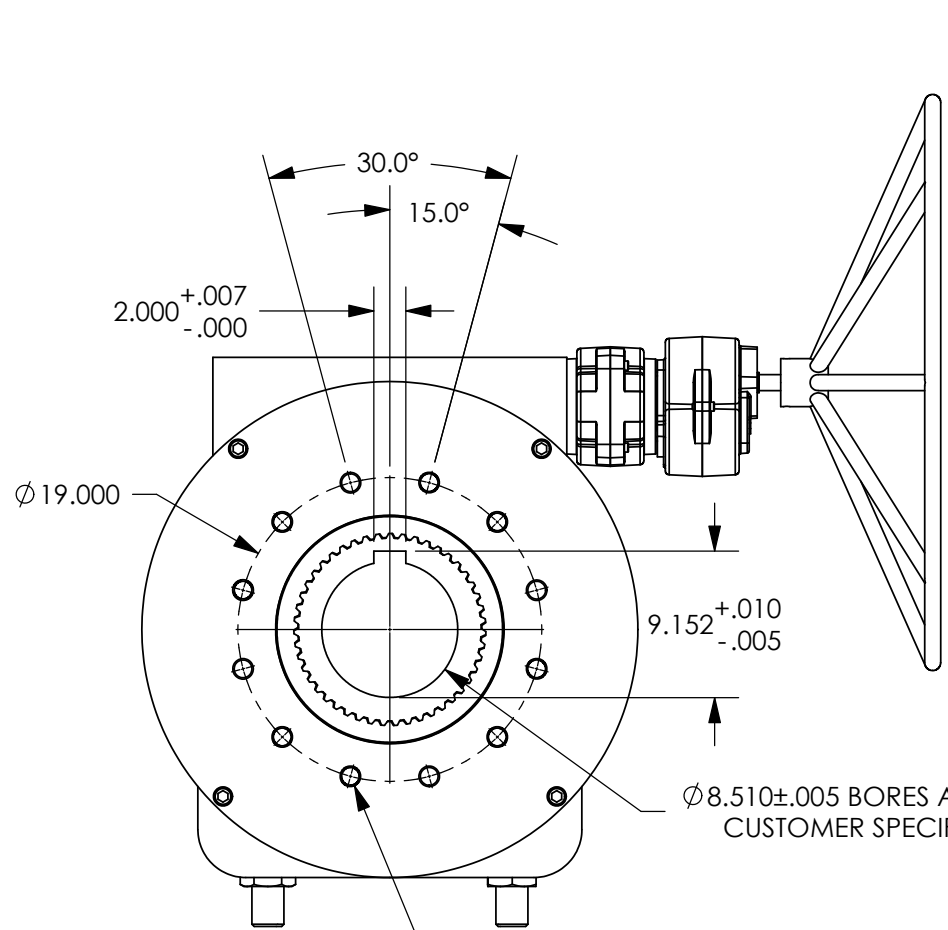


REVISIONS			
REV.	DESCRIPTION	DATE	APPROVED



12X ϕ 1.109 ∇ 1.380
 1-1/4-7 UNC ∇ 1.250
 ϕ 1.281 X 90°, Near Side
 BOLT PATTERN TO
 CUSTOMER SPECIFICATION

ϕ 8.510 \pm .005 BORES AND KEYS TO
 CUSTOMER SPECIFICATION

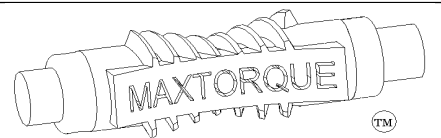
NOTES:

- FINAL RATIO RANGE: 28.25 : 1 - 1068 : 1
 BASE RATIO: 28.25 : 1, BASE SPUR RATIO: 3 : 1, AUXILLIARY SPUR RATIO RANGE: 3.75 : 1 - 12.6 : 1
- MAX BORE & KEY: ϕ 9 W/1" X 2 1/2" KEY
- MAX STEM ENGAGEMENT: 10 1/4"
- APPROXIMATE WEIGHT: 1451 LBS
- UNIT IS SHOWN IN THE "OPEN" POSITION

PROPRIETARY AND CONFIDENTIAL
 THE INFORMATION CONTAINED IN THIS
 DRAWING IS THE SOLE PROPERTY OF
 MAX TORQUE. ANY REPRODUCTION IN
 PART OR AS A WHOLE WITHOUT THE
 WRITTEN PERMISSION OF
 MAX TORQUE IS PROHIBITED.

UNLESS OTHERWISE SPECIFIED:	
DIMENSIONS ARE IN INCHES	
TOLERANCES:	
FRACTIONAL \pm 1/32	
ANGULAR: MACH \pm 1/2	
BEND \pm 1/2	
TWO PLACE DECIMAL \pm .02	
THREE PLACE DECIMAL \pm .005	
MATERIAL:	N/A
FINISH:	PAINT
DO NOT SCALE DRAWING	

NAME	DATE
JM	7/5/06
DRAWN	
CHECKED	
ENG APPR.	
MFG APPR.	
Q.A.	
COMMENTS:	



TITLE: BW4, MANUAL, GENERIC 700K TO 1000K IN-LBS		
SIZE B	DWG. NO. 300111	REV.
SCALE: 1:12	WT: 1451 lbs.	SHEET 1 OF 1

Wednesday, July 26, 2006 4:56:34 PM