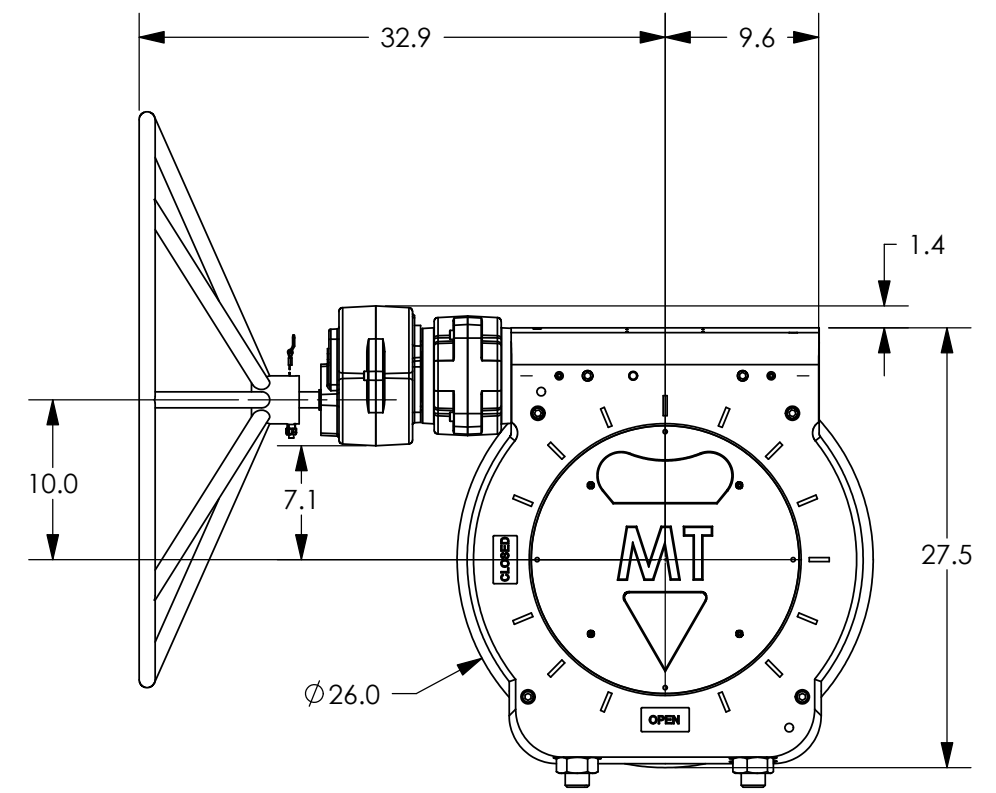
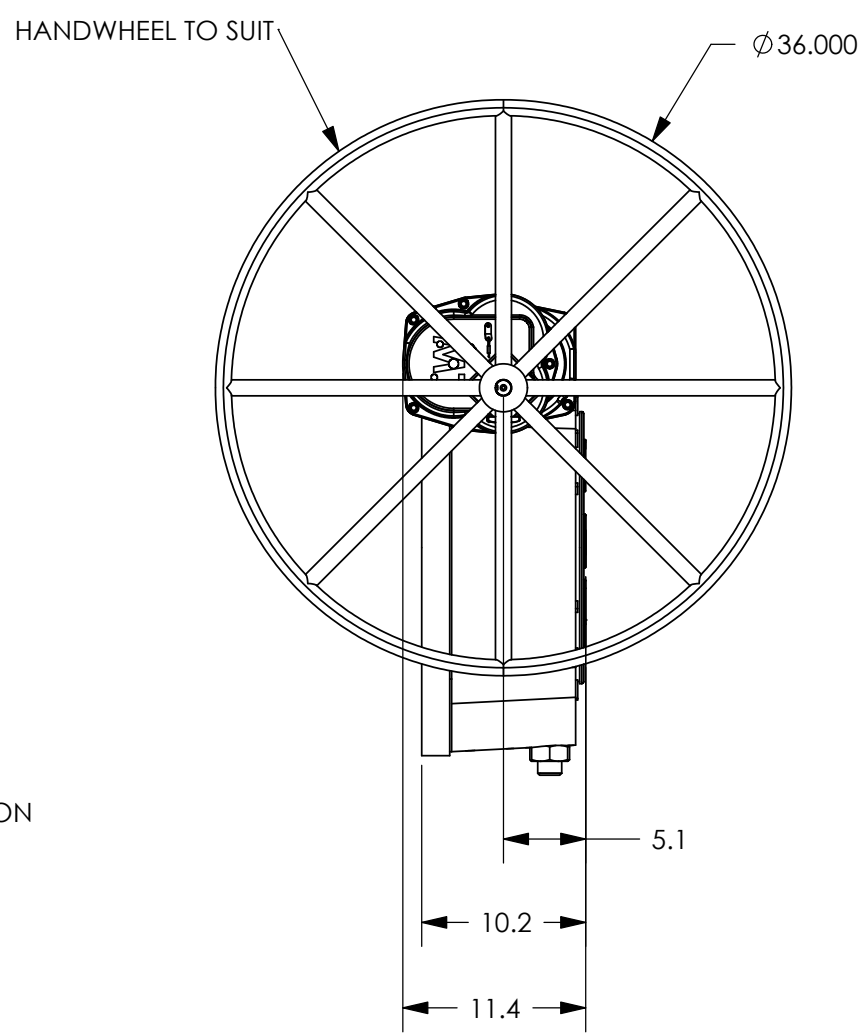
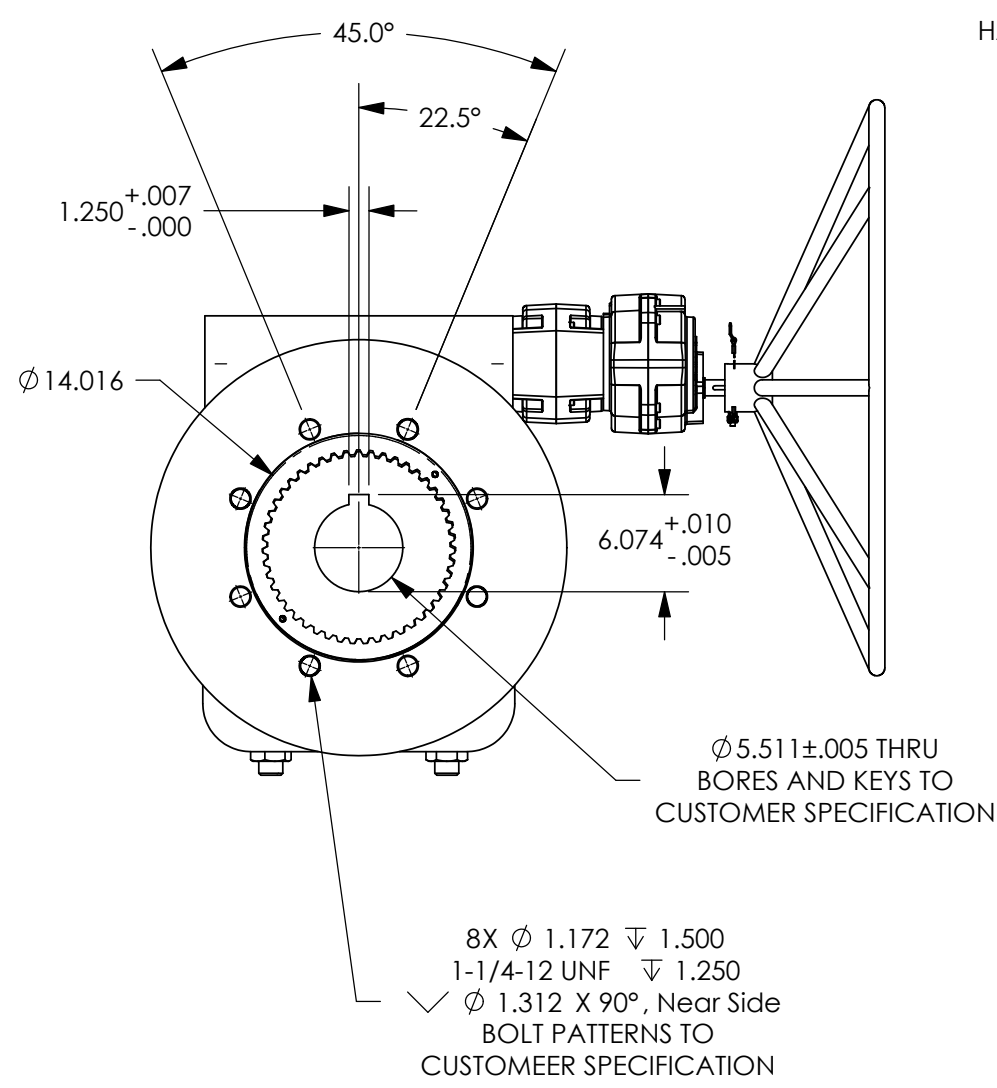



REVISIONS			
REV.	DESCRIPTION	DATE	APPROVED



- NOTES:
- FINAL RATIO RANGE: 22.75 : 1 - 860 : 1
BASE RATIO: 22.75 : 1, BASE SPUR RATIO: 3 : 1, AUXILLIARY SPUR RATIO: 3.75 : 1 - 12.6 : 1
 - MAX BORE & KEY: Ø9 W/1" X 1 1/2" KEY
 - MAX STEM ENGAGEMENT: 9.5"
 - APPROXIMATE WEIGHT: 1225 LBS
 - UNIT IS SHOWN IN THE "OPEN" POSITION

PROPRIETARY AND CONFIDENTIAL
THE INFORMATION CONTAINED IN THIS DRAWING IS THE SOLE PROPERTY OF MAX TORQUE. ANY REPRODUCTION IN PART OR AS A WHOLE WITHOUT THE WRITTEN PERMISSION OF MAX TORQUE IS PROHIBITED.

UNLESS OTHERWISE SPECIFIED:	NAME	DATE
DIMENSIONS ARE IN INCHES	JM	7/5/06
TOLERANCES:		
FRACTIONAL ±1/32		
ANGULAR: MACH ±1/2		
BEND ±1/2		
TWO PLACE DECIMAL ±.02		
THREE PLACE DECIMAL ±.005		
MATERIAL:		
N/A		
FINISH:		
PAINT		
DO NOT SCALE DRAWING		



TITLE BW3, MANUAL, GENERIC
400K TO 700K IN-LBS

SIZE	DWG. NO.	REV.
B	300108	

SCALE: 1:12 WT: 1225 lbs SHEET 1 OF 1

Monday, July 17, 2006 10:57:29 AM