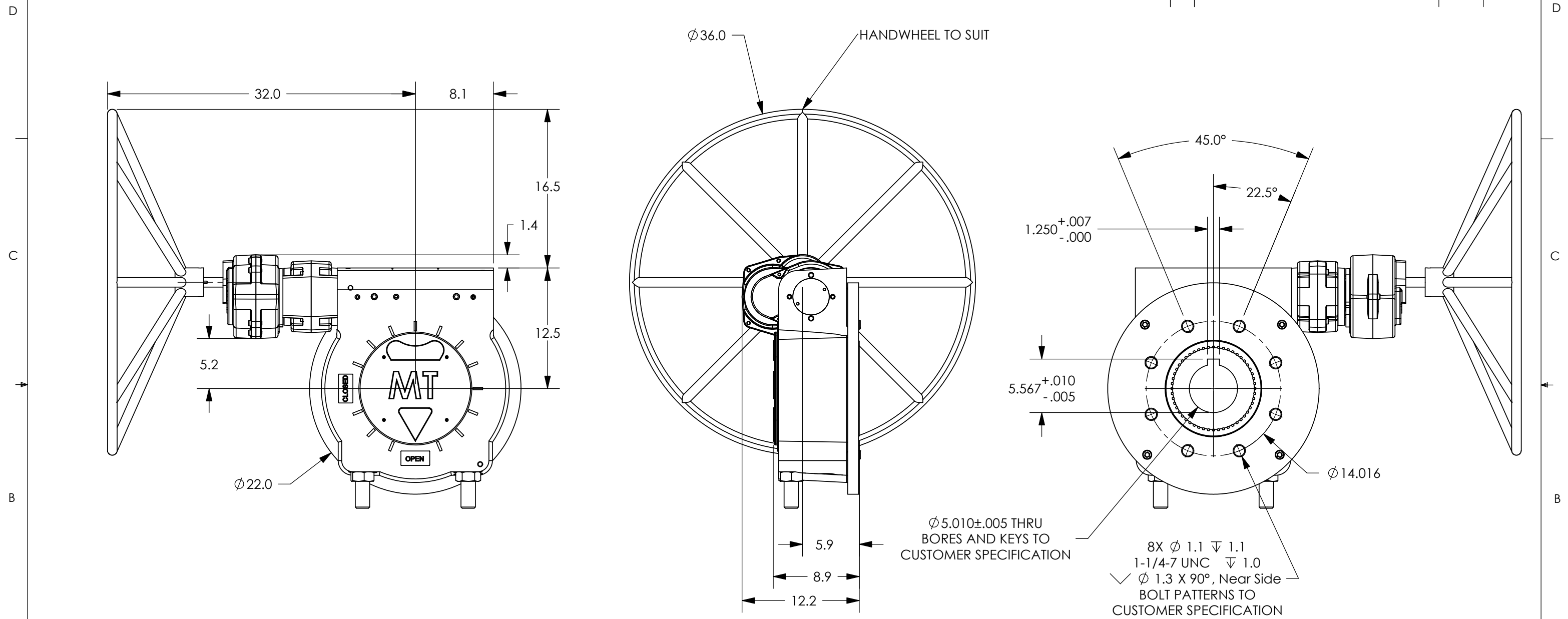


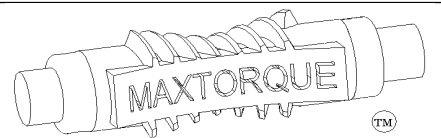
| REVISIONS | | | |
|-----------|-------------|------|----------|
| REV. | DESCRIPTION | DATE | APPROVED |
| | | | |
| | | | |
| | | | |



- NOTES:
- FINAL RATIO RANGE: 18.75 : 1 - 708.75 : 1
BASE RATIO: 18.75 : 1, BASE SPUR RATIO: 3 : 1, AUXILLIARY SPUR RATIO RANGE: 3.75 : 1 - 12.6 : 1
 - MAX BORE & KEY: $\phi 6 \frac{1}{2}$ " W/1 $\frac{1}{2}$ " X 1 KEY
 - MAX STEM ENGAGEMENT: 8 $\frac{3}{8}$ "
 - APPROXIMATE WEIGHT: 762 LBS
 - UNIT IS SHOWN IN THE OPEN POSITION

PROPRIETARY AND CONFIDENTIAL
THE INFORMATION CONTAINED IN THIS DRAWING IS THE SOLE PROPERTY OF MAX TORQUE. ANY REPRODUCTION IN PART OR AS A WHOLE WITHOUT THE WRITTEN PERMISSION OF MAX TORQUE IS PROHIBITED.

| | | | |
|--------------------------------|-------|-----------|---------|
| UNLESS OTHERWISE SPECIFIED: | | NAME | DATE |
| DIMENSIONS ARE IN INCHES | | DRAWN | JM |
| TOLERANCES: | | CHECKED | 6/30/06 |
| FRACTIONAL $\pm 1/32$ | | ENG APPR. | |
| ANGULAR: MACH $\pm 1/2$ | | MFG APPR. | |
| BEND $\pm 1/2$ | | Q.A. | |
| TWO PLACE DECIMAL $\pm .02$ | | COMMENTS: | |
| THREE PLACE DECIMAL $\pm .005$ | | | |
| MATERIAL: | N/A | | |
| FINISH: | PAINT | | |
| DO NOT SCALE DRAWING | | | |



| | | |
|--|--------------------|--------------|
| TITLE: BW2 MANUAL 200K TO 400K IN-LBS | | |
| SIZE B | DWG. NO. 300105 | REV. |
| SCALE: 1:10 | WT: 762 lbs | SHEET 1 OF 1 |

Friday, August 25, 2006 9:44:22 AM