

REVISIONS			
REV.	DESCRIPTION	DATE	APPROVED

D

D

C

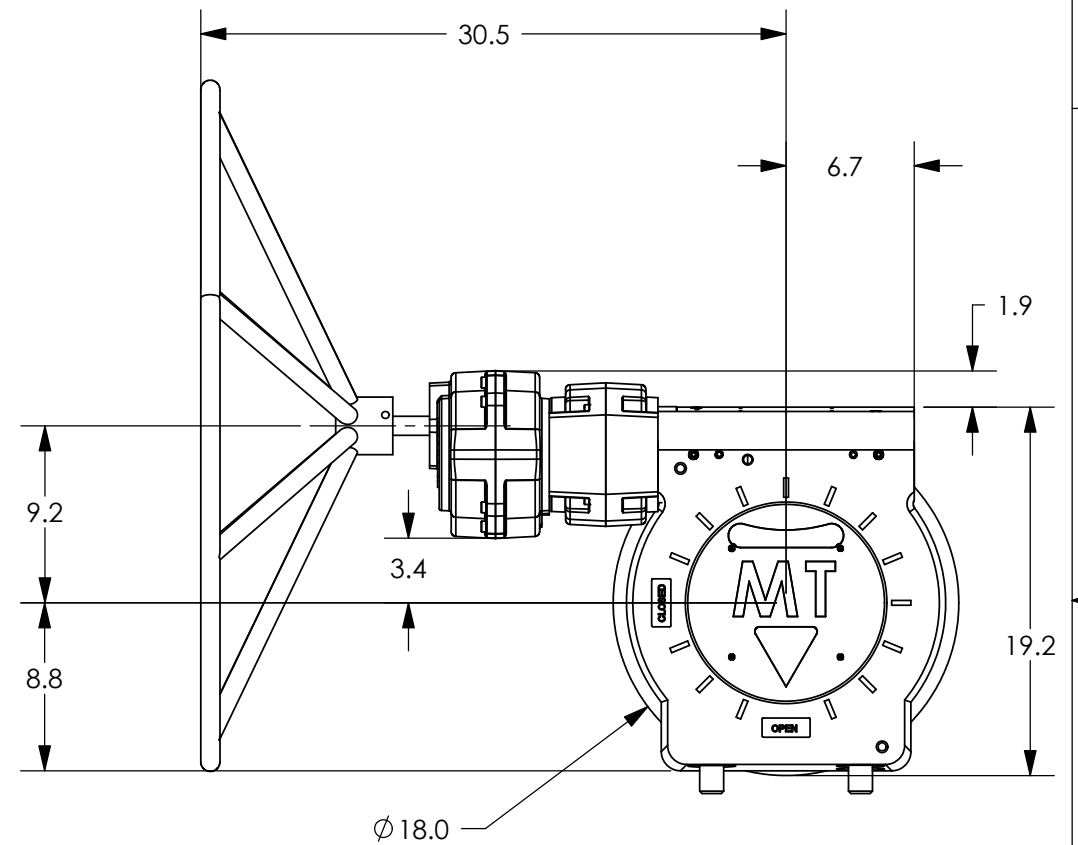
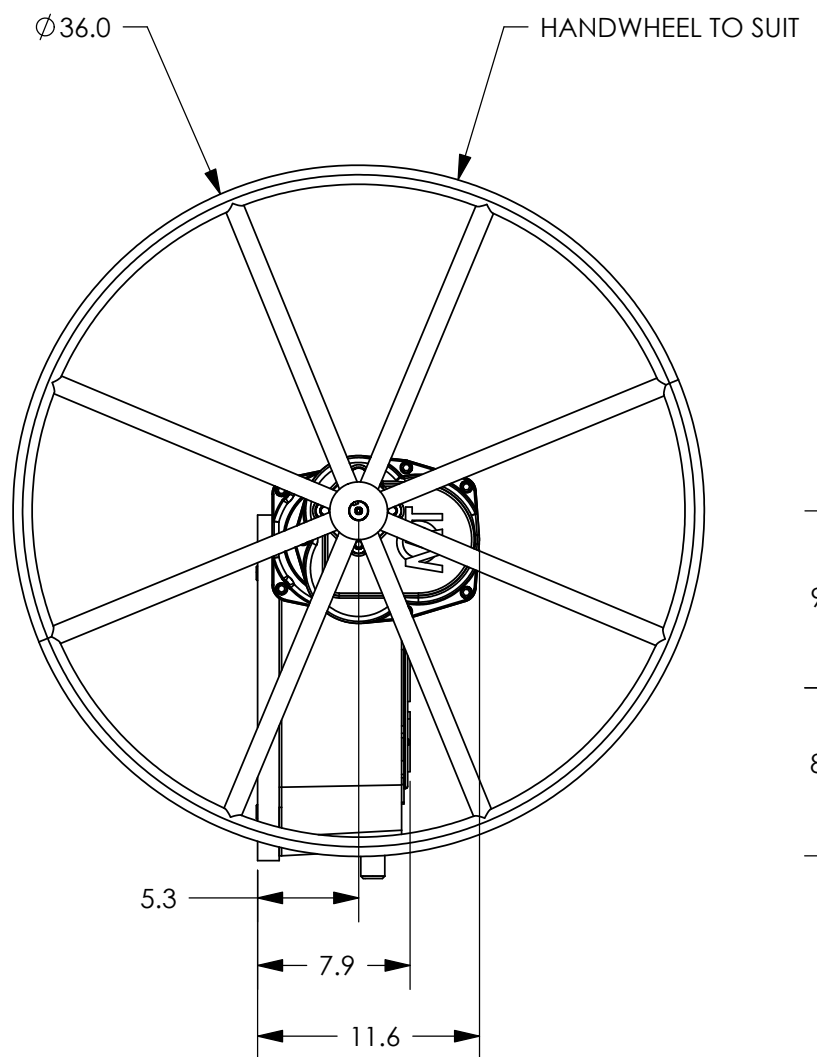
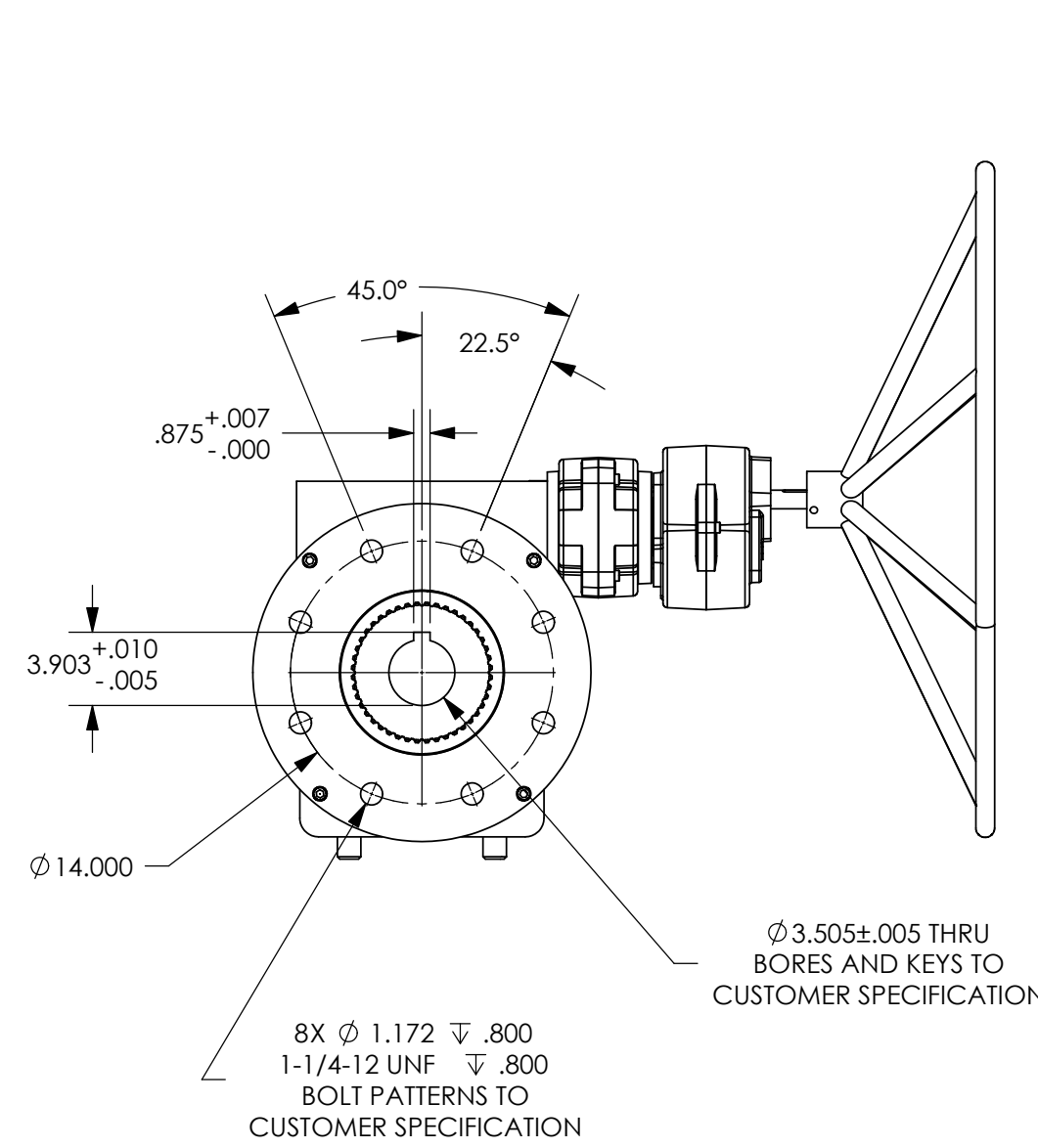
C

B

B

A

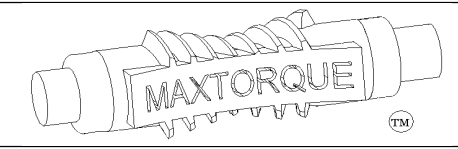
A



- NOTES:
- FINAL RATIO RANGE: 20.25 : 1 - 765.45 : 1  
BASE RATIO: 20.25 : 1, BASE SPUR RATIO 3 : 1, AUXILLIARY SPUR RATIO RANGE: 3.75 : 1 - 12.6 : 1
  - MAX BORE AND KEY: Ø 5 1/2" W/ 1 1/2" X 1" KEY
  - MAX STEM ENGAGEMENT: 7 1/2"
  - APPROXIMATE WEIGHT: 648 LBS
  - UNIT IS SHOWN IN THE "OPEN" POSITION

**PROPRIETARY AND CONFIDENTIAL**  
THE INFORMATION CONTAINED IN THIS DRAWING IS THE SOLE PROPERTY OF MAX TORQUE. ANY REPRODUCTION IN PART OR AS A WHOLE WITHOUT THE WRITTEN PERMISSION OF MAX TORQUE IS PROHIBITED.

UNLESS OTHERWISE SPECIFIED:			
DIMENSIONS ARE IN INCHES	NAME	DATE	
TOLERANCES:	DRAWN	JM	6/29/06
FRACTIONAL ± 1/32	CHECKED		
ANGULAR: MACH ± 1/2	ENG APPR.		
BEND ± 1/2	MFG APPR.		
TWO PLACE DECIMAL ± .02	Q.A.		
THREE PLACE DECIMAL ± .005	COMMENTS:		
MATERIAL:			
N/A			
FINISH:			
PAINT			
DO NOT SCALE DRAWING	Wednesday, July 26, 2006 12:12:15 PM		



TITLE: BW1 W/BS3, & AX MANUAL 100K TO 200K IN-LBS		
SIZE <b>B</b>	DWG. NO. 300102	REV.
SCALE: 1:10	WT: 648 lbs.	SHEET 1 OF 1