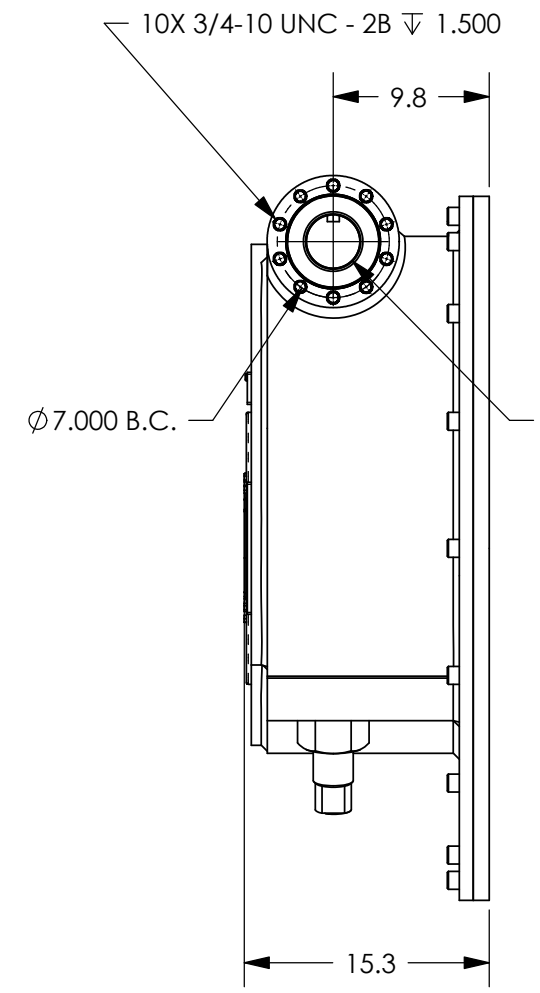
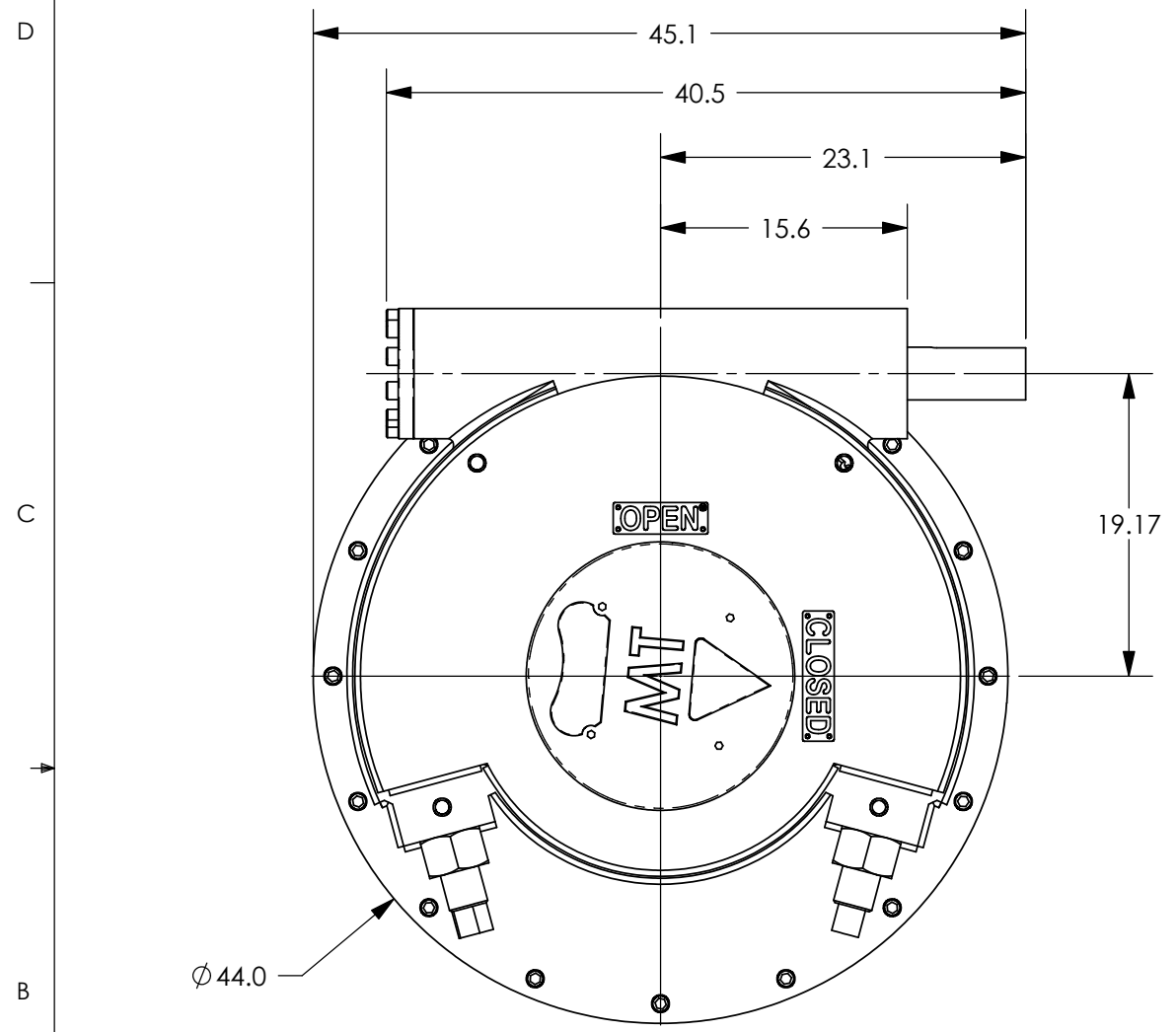
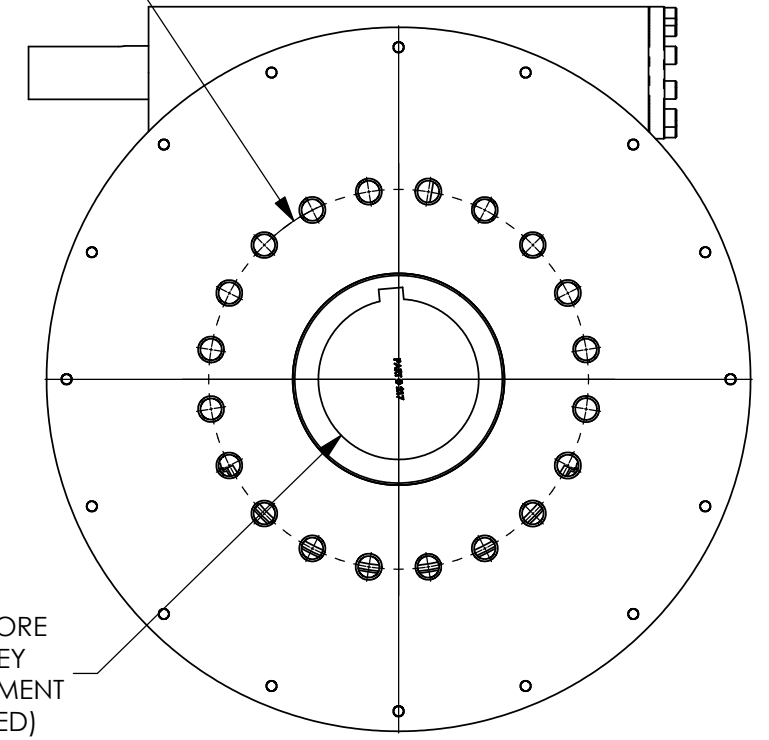


REVISIONS			
REV.	DESCRIPTION	DATE	APPROVED



FA60 BOLT PATTERN  
(RECOMMENDED)  
\*THREADS MUST SEAL  
AT ASSEMBLY TO VALVE




NOTES:  
RATIO: 27.25 : 1  
MAX BORE & KEY:  $\phi 10"$ , WITH 2 1/2" X 2" KEY  
MAX. STEM ENGAGEMENT: 14 3/4"  
BOLT PATTERN TO SUIT  
(OTHER BASE PLATES AVAILABLE)  
WEIGHT: APPROX. 2250 LBS

**PROPRIETARY AND CONFIDENTIAL**  
THE INFORMATION CONTAINED IN THIS DRAWING IS THE SOLE PROPERTY OF MAX TORQUE. ANY REPRODUCTION IN PART OR AS A WHOLE WITHOUT THE WRITTEN PERMISSION OF MAX TORQUE IS PROHIBITED.

UNLESS OTHERWISE SPECIFIED:	
DIMENSIONS ARE IN INCHES	
TOLERANCES:	
FRACTIONAL $\pm 1/32$	
ANGULAR: MACH $\pm 1/2$	
BEND $\pm 1/2$	
TWO PLACE DECIMAL $\pm .02$	
THREE PLACE DECIMAL $\pm .005$	
MATERIAL:	N/A
FINISH:	PAINT
DO NOT SCALE DRAWING	

NAME	DATE
JRM	03.18.05
DRAWN	
CHECKED	
ENG APPR.	
MFG APPR.	
Q.A.	
COMMENTS:	



TITLE: **MW2**  
STANDARD UNIT (RHP)

SIZE	DWG. NO.	REV.
<b>B</b>	300071	-

SCALE: 1:12 WT: 2250 lbs SHEET 1 OF 1

Friday, March 18, 2005 3:26:59 PM