

REVISIONS			
REV.	DESCRIPTION	DATE	APPROVED

D

D

C

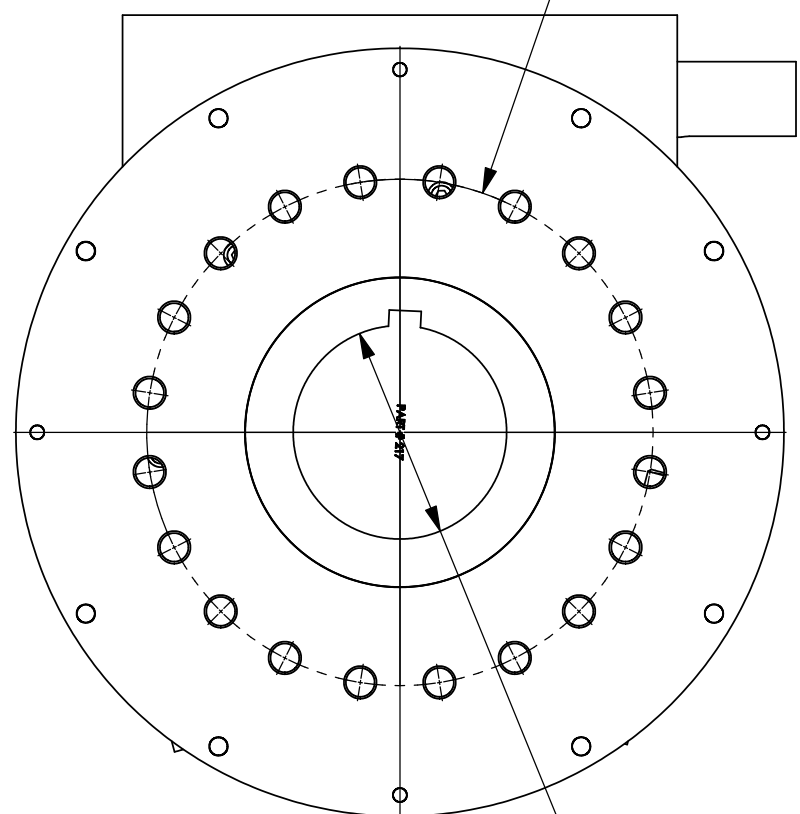
C

B

B

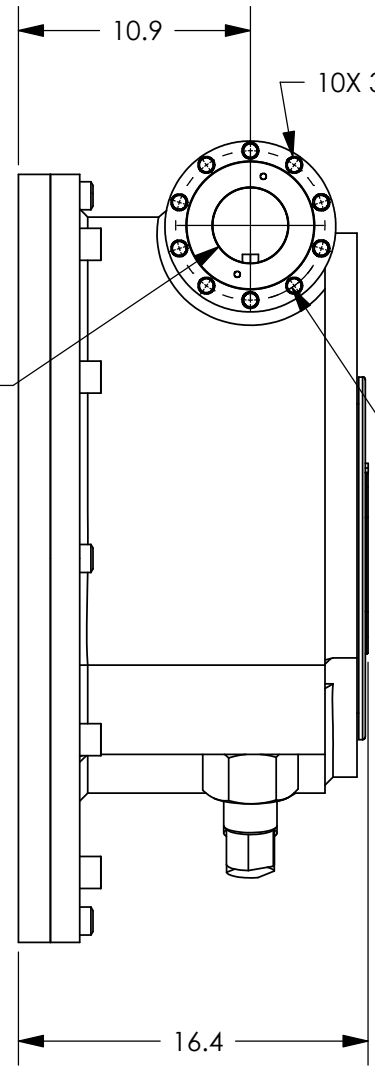
A

A



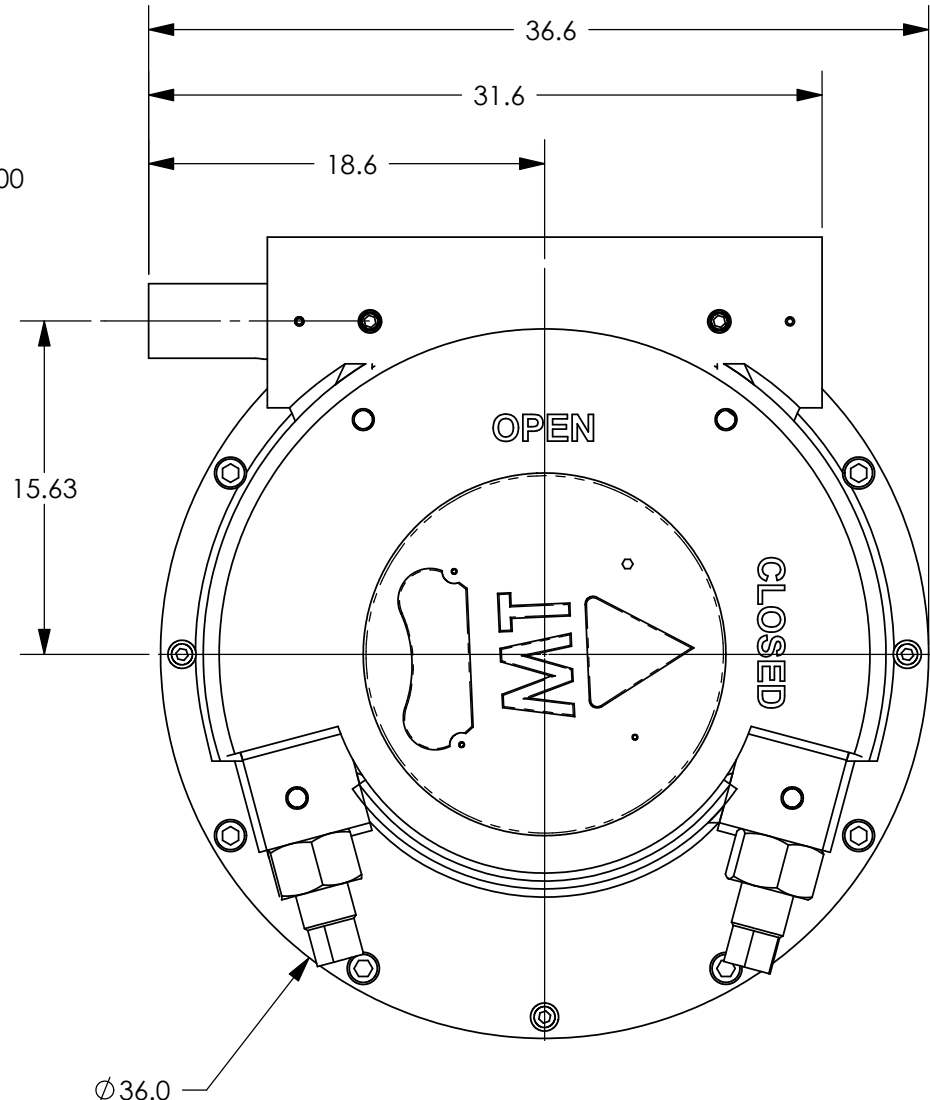
FA60 BOLT PATTERN
(RECOMMENDED)
*THREADS MUST SEAL
AT ASSEMBLY TO VALVE

Ø 10.010 ± .010 BORE
W/ 1.500 SQ. KEY
8" STEM ENGAGEMENT
(RECOMMENDED)



Ø 3.538
NOMINAL
SHAFT
DIAMETER

Ø 7.000 B.C.



OPEN

CLOSED

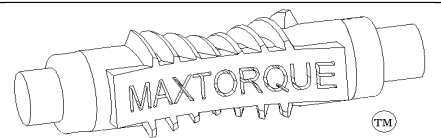
Ø 36.0

RATIO: 22.25 : 1
MAX. BORE & KEY: Ø 10", WITH 2 1/2" X 2" KEY
MAX. STEM ENGAGEMENT: 14 3/4"
BOLT PATTERN TO SUIT
(OTHER BASE PLATES AVAILABLE)
WEIGHT: APPROX. 2100 LBS.

PROPRIETARY AND CONFIDENTIAL
THE INFORMATION CONTAINED IN THIS
DRAWING IS THE SOLE PROPERTY OF
MAX TORQUE. ANY REPRODUCTION IN
PART OR AS A WHOLE WITHOUT THE
WRITTEN PERMISSION OF
MAX TORQUE IS PROHIBITED.

UNLESS OTHERWISE SPECIFIED:	
DIMENSIONS ARE IN INCHES	
TOLERANCES:	
FRACTIONAL ± 1/32	
ANGULAR: MACH ± 1/2	
BEND ± 1/2	
TWO PLACE DECIMAL ± .02	
THREE PLACE DECIMAL ± .005	
MATERIAL:	N/A
FINISH:	PAINT
DO NOT SCALE DRAWING	

NAME	JRM	DATE	01.27.05
DRAWN			
CHECKED			
ENG APPR.			
MFG APPR.			
Q.A.			
COMMENTS:			



TITLE: MW1 STANDARD UNIT (LHP)		
SIZE	DWG. NO.	REV.
B	300062	--
SCALE: 1:9	WT: 2100 lbs	SHEET 1 OF 1

Friday, March 18, 2005 3:32:22 PM