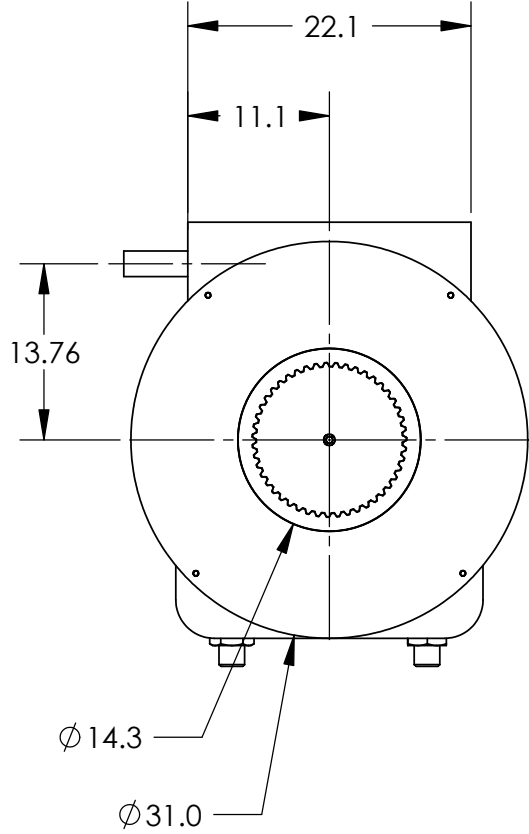
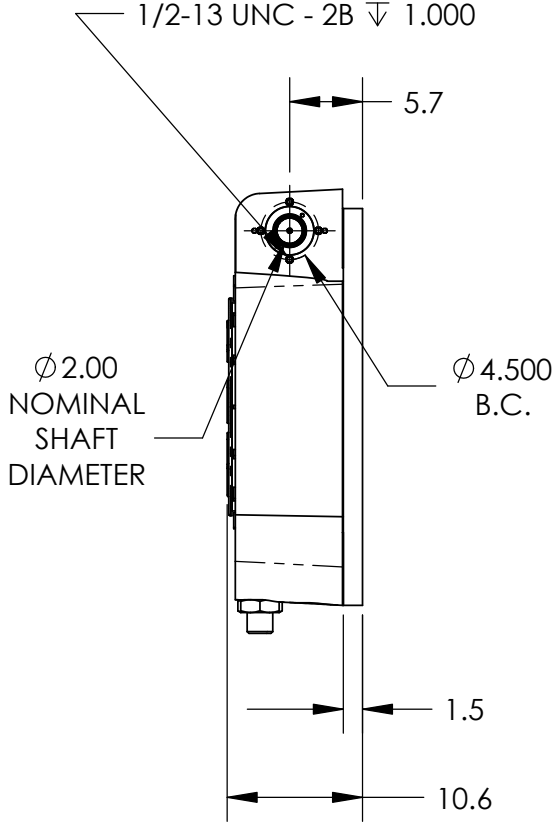
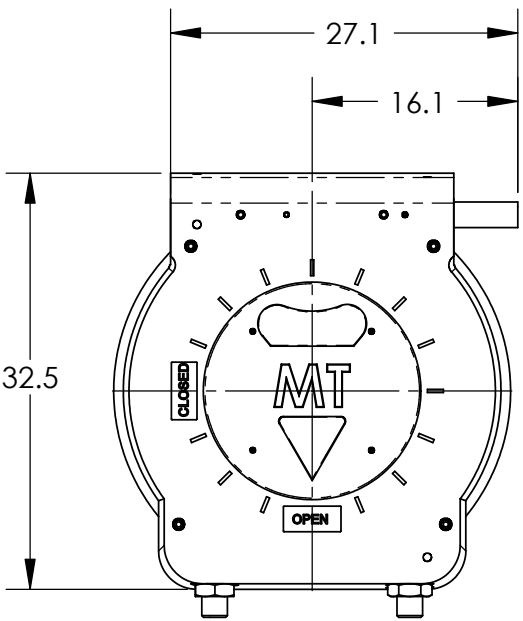



REVISIONS			
REV.	DESCRIPTION	DATE	APPROVED



RATIO: 28.25
 MAX. BORE & KEY: Ø 9", WITH 2" X 1 1/2" KEY
 MAX. STEM ENGAGEMENT: 10 1/4"
 BOLT PATTERN TO SUIT
 (OTHER BASE PLATES AVAILABLE)
 WEIGHT: APPROX. 1500 LBS.

PROPRIETARY AND CONFIDENTIAL
 THE INFORMATION CONTAINED IN THIS DRAWING IS THE SOLE PROPERTY OF MAXTORQUE, LLC. ANY REPRODUCTION IN PART OR AS A WHOLE WITHOUT THE WRITTEN PERMISSION OF MAXTORQUE, LLC IS PROHIBITED.

UNLESS OTHERWISE SPECIFIED:		NAME	DATE		
DIMENSIONS ARE IN INCHES		DRAWN	JRM		11.03.04
TOLERANCES:		CHECKED			
FRACTIONAL ±1/32		ENG APPR.			
ANGULAR: MACH ±1/2		MFG APPR.			
BEND ±1/2		Q.A.			
TWO PLACE DECIMAL ±.02		COMMENTS:		TITLE: BW4	
THREE PLACE DECIMAL ±.005				STANDARD UNIT	
MATERIAL:	N/A			SIZE DWG. NO.	
FINISH:	N/A			A 300031	
DO NOT SCALE DRAWING		Friday, March 18, 2005 1:18:21 PM		REV. --	
		SCALE: 1:15	WEIGHT: 1500 LBS.	SHEET 1 OF 1	