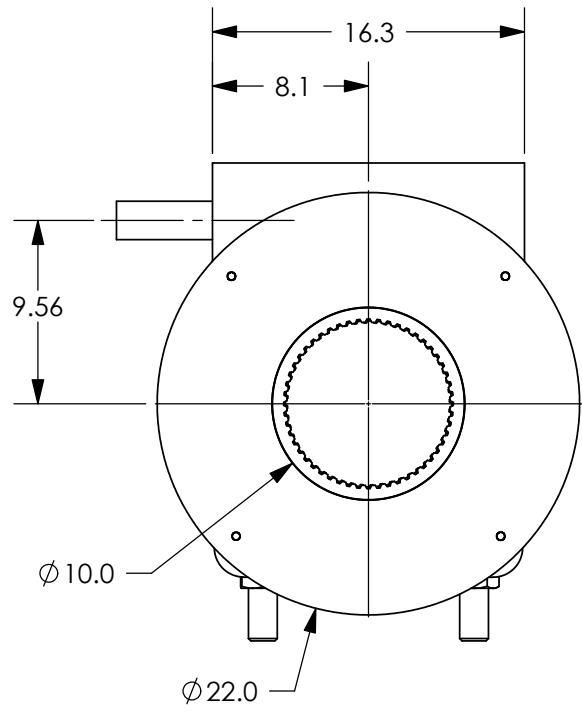
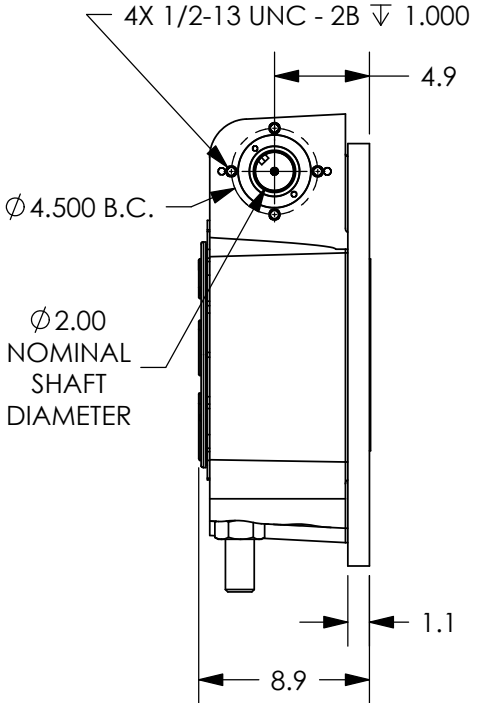
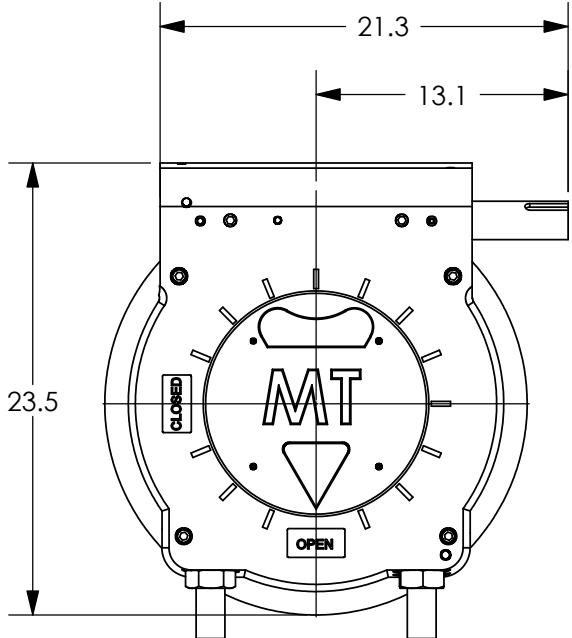


REVISIONS			
REV.	DESCRIPTION	DATE	APPROVED



RATIO: 18.75  
 MAX. BORE & KEY:  $\phi 6 \frac{1}{2}$ ", WITH  $1 \frac{1}{2}$ " X 1" KEY  
 MAX. STEM ENGAGEMENT:  $8 \frac{3}{8}$ "  
 BOLT PATTERN TO SUIT  
 (OTHER BASE PLATES AVAILABLE)  
 WEIGHT: APPROX. 560 LBS.

**PROPRIETARY AND CONFIDENTIAL**  
 THE INFORMATION CONTAINED IN THIS DRAWING IS THE SOLE PROPERTY OF MAXTORQUE, LLC. ANY REPRODUCTION IN PART OR AS A WHOLE WITHOUT THE WRITTEN PERMISSION OF MAXTORQUE, LLC IS PROHIBITED.

UNLESS OTHERWISE SPECIFIED:		NAME	DATE
DIMENSIONS ARE IN INCHES		DRAWN	JRM 03.18.05
TOLERANCES:		CHECKED	
FRACTIONAL $\pm 1/32$		ENG APPR.	
ANGULAR: MACH $\pm 1/2$		MFG APPR.	
BEND $\pm 1/2$		Q.A.	
TWO PLACE DECIMAL $\pm .02$		COMMENTS:	
THREE PLACE DECIMAL $\pm .005$			
MATERIAL: N/A			
FINISH: N/A		Friday, March 18, 2005 12:26:43 PM	
DO NOT SCALE DRAWING			



TITLE: BW2 STANDARD UNIT		
SIZE	DWG. NO.	REV.
A	300011	-
SCALE: 1:10	WEIGHT: 560 LBS.	SHEET 1 OF 1